

# **ANNUAL HIV SURVEILLANCE SUMMARY REPORT**

**COMMONWEALTH OF PENNSYLVANIA**

**2016**



Published June 2017

## Contact Information and Contributors

**The Annual HIV Surveillance Summary is Prepared by the  
Bureau of Epidemiology  
Pennsylvania Department of Health**

Bureau of Epidemiology  
Division of Infectious Disease Epidemiology  
HIV Surveillance and Epidemiology Section

Sharon Watkins, PhD, Director, Bureau of Epidemiology  
Atmaram Nambiar, MD, MPH, Director, Division of Infectious Disease Epidemiology  
Godwin Obiri, DrPH, MS, Director, HIV Surveillance and Epidemiology  
Martin Ngokion, MD, MPH, Epidemiologist  
Michael Allen, MPH, Epidemiology Research Associate  
Bonnie Krampe, MPH, Epidemiology Research Associate  
Ikechukwu Onukogu, MS, Epidemiology Program Specialist

The HIV Surveillance and Epidemiology Section gratefully acknowledges the support of community health districts, county/municipal health departments, physicians, hospitals and laboratories reporting HIV cases in Pennsylvania. This project is funded by a grant award from the Centers for Disease Control and Prevention.

Requests for reprints, updates and inquiries may be sent to:

ATTN: 'Annual HIV Disease Summary Report' Requests  
HIV Surveillance and Epidemiology Section  
Division of Infectious Disease Epidemiology  
Bureau of Epidemiology  
Pennsylvania Department of Health  
Health and Welfare Building, Room 933  
625 Forster St.  
Harrisburg, PA 17120

The data provided in the tables, figures and maps are based on HIV reports received through March 31, 2017. Expanded analysis of data presented in the Annual HIV Surveillance Summary and other HIV data may be requested by sending email to [c-hivepi@pa.us](mailto:c-hivepi@pa.us) or by telephone/fax to our office at 717-783-0481 (tel) or 717-772-6975 (fax).

The Pennsylvania Department of Health is an equal opportunity provider of grants, contracts, services and employment

Suggested Citation of Data Source: Annual HIV Disease Surveillance Summary  
Bureau of Epidemiology, Pennsylvania Department of Health  
Publication Number: HD0234P

## **A Special Note for the Readers of the Pennsylvania HIV Surveillance Report Explanation for Changes in the Annual HIV Surveillance Summary Report**

This note is intended to inform all readers of changes we have introduced in the Pennsylvania Annual Human Immunodeficiency Virus (HIV) Surveillance Summary Report. The format of this annual summary has changed from the format used in previous years to reflect some changes in the way HIV is viewed. This report considers HIV infection as a single disease entity with varying degrees of severity rather than using separate disease classifications for HIV infection without AIDS and acquired immunodeficiency syndrome (AIDS).

Since the inception of the annual summary report, HIV has been depicted as two conditions, HIV infection without AIDS and AIDS, respectively. This artificial separation served a purpose at the time. However, with advances in the clinical and epidemiologic experiences with HIV infection, HIV disease is now viewed as a spectrum condition; progressing from early stage of infection to full-blown symptomatic infection.

In 2002, Pennsylvania promulgated public health regulations revising the reportability of adult and pediatric AIDS, adding HIV, CD4 count (<200 cells/uL or <14%), detectable viral load and perinatal exposure to HIV. The new regulations took effect on October 18, 2002 and active surveillance was conducted retrospectively to January 1, 2000. Since that time, HIV reporting has been ongoing statewide with the exception of the county of Philadelphia where it did not become reportable by name until October 2005.

In addition, the US Centers for Disease Control and Prevention (CDC) has recently made changes to the HIV case definition, taking into account advances in testing and detection. This new case definition recognizes HIV infection as a disease with varying degrees of severity. For adults and adolescents (i.e., persons aged >13 years), the HIV infection classification system and the surveillance case definitions for HIV infection and AIDS were revised by the CDC in 2008 and combined into a single case definition for HIV infection. In addition, the HIV infection case definition for children aged <13 years and the AIDS case definition for children aged 18 months to <13 years were also revised. No changes were made to the HIV infection classification system, the 24 AIDS-defining conditions for children aged <13 years, or the AIDS case definition for children aged <18 months. These case definitions are intended for public health surveillance only and not as a guide for clinical diagnosis. CDC and the Council of State and Territorial Epidemiologists recommended that all states and territories conduct case surveillance of HIV infection and AIDS using the 2008 surveillance case definitions.

The data in previous years tables and figures were constructed separately for HIV infection without AIDS and AIDS. Most tables and figures now have HIV infection without AIDS combined with AIDS under one identity called HIV disease. Consequently, any comparison of this report to previous years should take into account these differences.

Question or comment can be directed to

Dr. Godwin Obiri, Director, HIV Surveillance and Epidemiology  
Bureau of Epidemiology  
717-783-0481 or email: [gobiri@pa.gov](mailto:gobiri@pa.gov)

## Table of Contents

	PAGE
2017 HIV Surveillance Spotlight	4
Figure 1 Annual Diagnoses of AIDS and HIV infection Without AIDS, 1980-2016	5
Figure 2 Number of Cases of AIDS and HIV Infection Without AIDS by Current Vital Status and Year of Diagnosis	6
Table 1 Annual Diagnoses of HIV Disease for Adult/Adolescent and Pediatric by Year of Diagnosis	7
Table 2 Number of Cases of HIV Disease by Sex, Race/Ethnicity and Year of Diagnosis, 2011-2016	8
Table 3 Number of Cases of HIV Disease by Age and Year of Diagnosis, 2011-2016	9
Table 4 Number of Cases of HIV Disease by Mode of Transmission and Year of Diagnosis, 2011-2016	10
Table 5 Number of HIV Disease by Mode of Transmission and Race/Ethnicity	11
Table 5A HIV Disease for Males by Mode of Transmission by Race/Ethnicity 1980-1990, 1991-2000 and 2001-2016	12
Table 5B HIV Disease for Females by Mode of Transmission by Race/Ethnicity 1980-1990, 1991-2000 and 2001-2016	13
Table 6 Cumulative Cases of HIV Disease by Vital Status and County of Residence, 2011-2016	14
Table 7 Annual Diagnoses of HIV Disease by County of Residence, 2011-2016	15
Figure 3 New Diagnoses of HIV Disease by County, 2015	16
Figure 4 Rate of New HIV Disease Diagnosed by County, 2015	17
Table 8 Characteristics of HIV Disease Cases by Time Interval of Diagnosis, 2011-2016	18
<b><i>Characteristics of HIV Disease For Seven Geographic Areas</i></b>	
Table 9 Characteristics of HIV Disease Cases by Time Interval of Diagnosis, AIDS Activities Coordinating Office	19
Table 10 Characteristics of HIV Disease Cases by Time Interval of Diagnosis, AIDSNET	20
Table 11 Characteristics of HIV Disease Cases by Time Interval of Diagnosis, Northeast Region	21
Table 12 Characteristics of HIV Disease Cases by Time Interval of Diagnosis, Northcentral Region	22
Table 13 Characteristics of HIV Disease Cases by Time Interval of Diagnosis, Southcentral Region	23
Table 14 Characteristics of HIV Disease Cases by Time Interval of Diagnosis, Southwest Region	24
Table 15 Characteristics of HIV Disease Cases by Time Interval of Diagnosis, Northwest Region	25
Figure 5 Confirmed Cases of Pediatric HIV Disease and Perinatal HIV Exposure, 2002-2016	26

# HIV Surveillance Spotlight

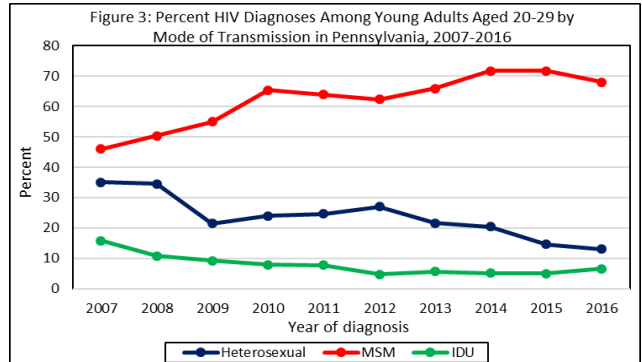
## HIV Diagnoses Among Young Adults 20–29 Years Old in Pennsylvania, 2007–2016

**Background:** In Pennsylvania, the first case of HIV disease was diagnosed in 1981. The number of newly diagnosed HIV disease increased steadily throughout the 1980s and peaked in the early 1990s. Since the mid-1990s, the number of new cases has steadily declined, but this decline has not been the same among all age groups and risk categories. A recent analysis has shown that during the 10 years between 2007 and 2016, there was an increase in the number of new cases of HIV disease among individuals age 20 to 29 at the time of diagnosis. While all other age groups have recorded a significant decline in the number of new HIV diagnoses, a gradual increase in the number of new HIV diagnoses for this age group that began in early 2000 has not started to decline. The objective of this evaluation is to determine characteristics of new HIV diagnoses in young adults 20–29 years old using data reported over the recent 10 years (2007–2016).

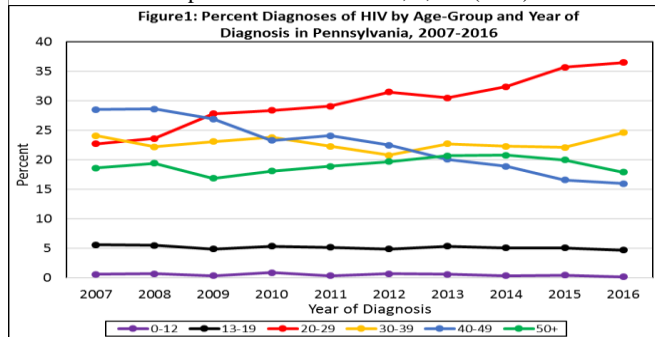
**Method:** Data from the Enhanced HIV/AIDS Reporting System was used exclusively to address this objective. The period examined included diagnoses between 2007 and 2016 and among those ages 20 through 29 at the time of HIV diagnosis.

**Results:** Over the 10-year period, a total of 14,565 HIV infected individuals were reported. Of this number, 4,225 (29%) were

continued to increase in the past 10 years. The percent has increased from 22.7% in 2007 to 36.5% in 2016. These cases are predominantly blacks/African Americans. For each successive year, blacks/African Americans made up 50–60% of new HIV diagnoses in this age group (Figure 2). The evaluation of mode of HIV transmission for this group showed that individuals who are classified as MSM are contributing the most of the new infections, starting with 40% in 2007 to about 70% in 2016 (Figure 3). For the



10-year period, the percent of MSM within each racial group increased. For blacks/African Americans, it went from 48% to 72.9%, whites from 48% to 73.2%, and Hispanics from 27% to 77.1%. Figure 4 shows the distribution of new HIV diagnoses among young adults 20–29 years old by county in Pennsylvania reported over the past 10 years. The highest number of reported cases are in the urban areas and in the southcentral and southeastern parts of the state.



individuals 20–29 years old. As can be seen in Figure 1, the trend in the percent of new HIV diagnoses for individuals aged 20–29 has

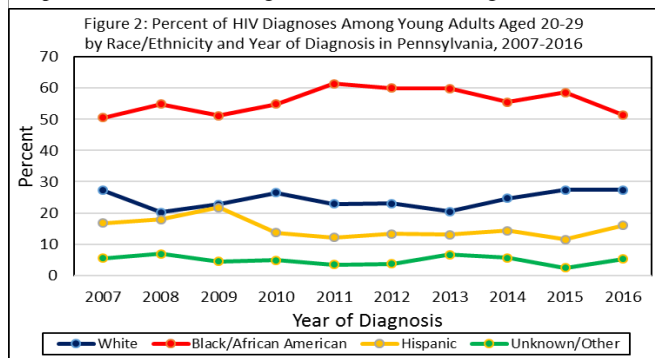
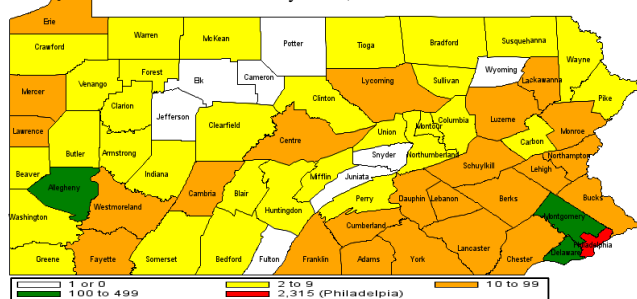
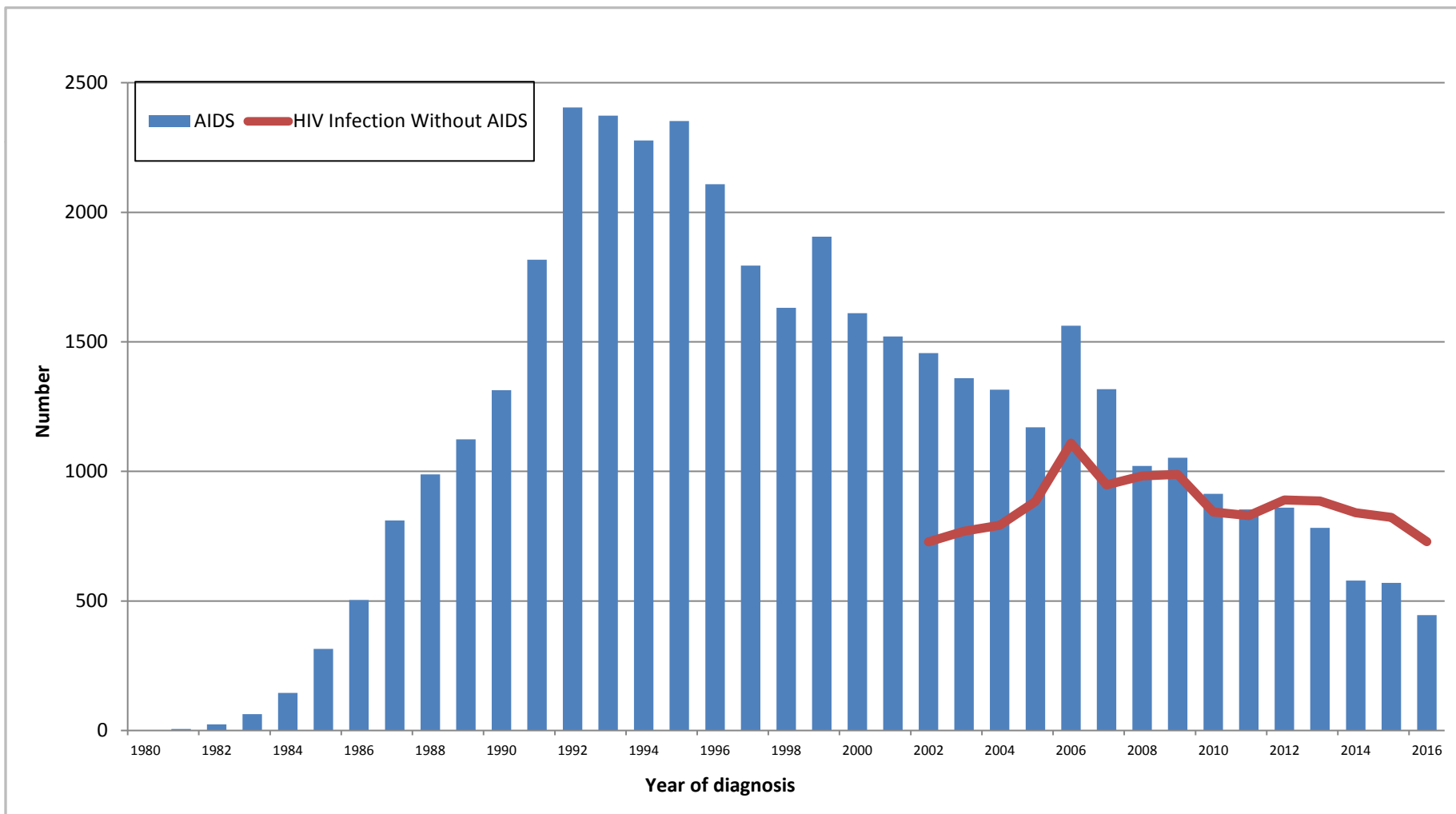


Figure 4: HIV diagnoses among young adults age 20–29 by County in Pennsylvania, 2007–2016



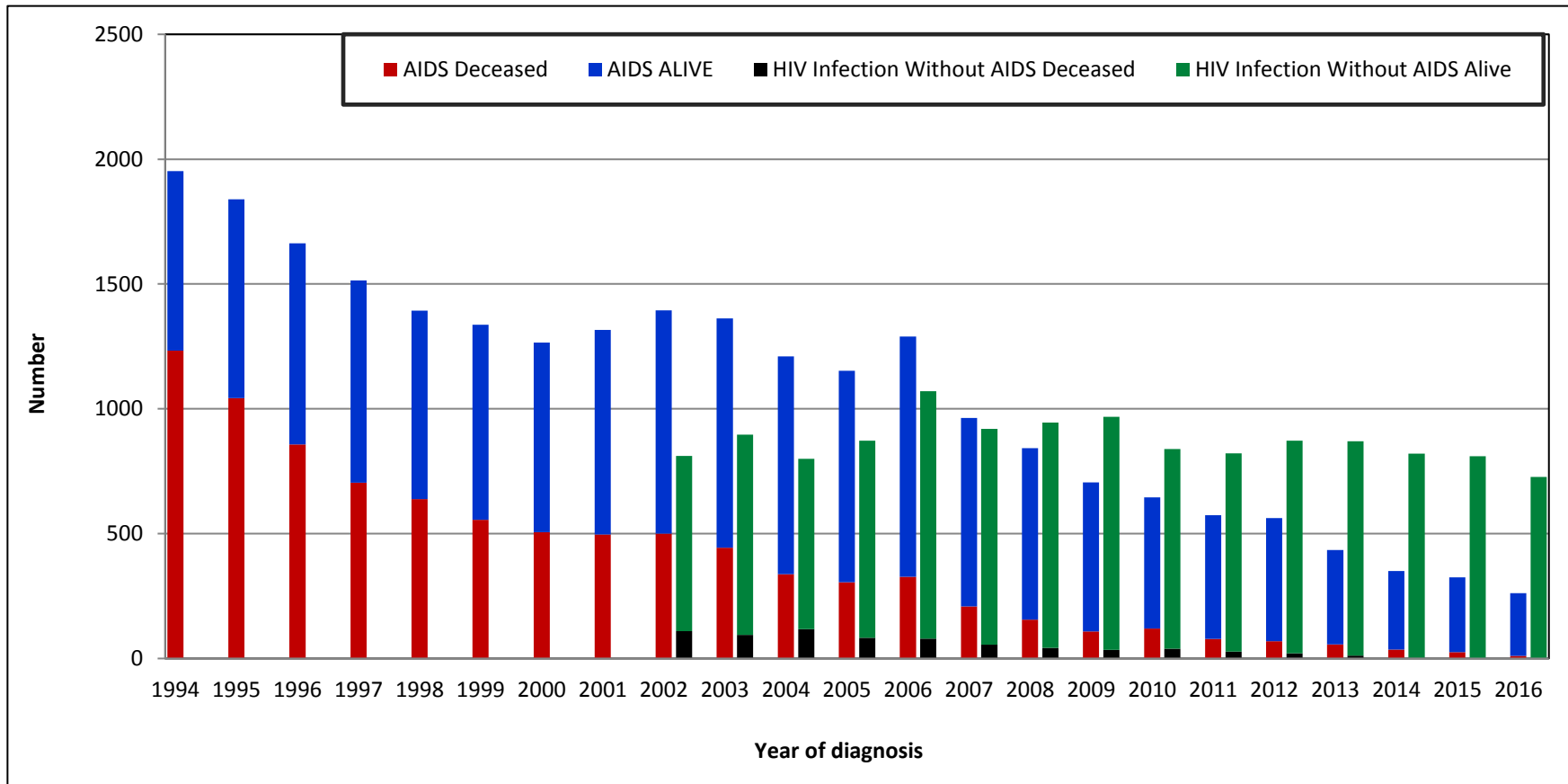
**Summary:** This analysis shows that while other age groups have seen continuous declines in new diagnoses of HIV, young adults age 20–29 years old predominate among new HIV diagnoses over the last 10 years. Young adults diagnosed with HIV are more likely to be black/African American and MSM. There is need for increased screening and HIV prevention messages targeted at these young adults. Concerted efforts should be made towards prompt linkage to medical care for those diagnosed. Those linked to treatment should be supported to remain in care to achieve optimal treatment effect.

**Figure 1**  
 Annual Diagnoses of AIDS and HIV Infection Without AIDS by Year of Diagnosis in Pennsylvania  
 1980-2016



Note: HIV Infection Without AIDS became reportable in Pennsylvania in October 2002 Page 5

**Figure 2**  
 Number of Cases of AIDS and HIV Infection Without AIDS in Pennsylvania  
 Current Vital Status by Year of Diagnosis  
 1994-2016



Note: HIV Infection Without AIDS became reportable in Pennsylvania in October 2002

**TABLE 1**

Annual Diagnoses of HIV Disease in Pennsylvania  
 Among Adult/Adolescent and Pediatric Cases  
 by Year of Diagnosis, 1980-2016

YEAR OF DIAGNOSIS	ADULT/ADOLESCENT	PEDIATRIC*	TOTAL
1980	3	0	3
1981	8	1	9
1982	50	3	53
1983	106	5	111
1984	257	4	261
1985	780	26	806
1986	1,082	16	1,098
1987	1,552	17	1,569
1988	1,911	23	1,934
1989	2,446	24	2,470
1990	2,951	39	2,990
1991	2,967	36	3,003
1992	2,859	67	2,926
1993	2,356	71	2,427
1994	2,230	40	2,270
1995	2,145	44	2,189
1996	2,051	36	2,087
1997	1,888	27	1,915
1998	1,804	34	1,838
1999	1,737	31	1,768
2000	1,750	18	1,768
2001	1,783	25	1,808
2002 <sup>^</sup>	2,106	18	2,124
2003	2,114	25	2,139
2004	1,999	10	2,009
2005	2,036	13	2,049
2006	2,402	13	2,415
2007	1,913	12	1,925
2008	1,829	14	1,843
2009	1,702	6	1,708
2010	1,500	14	1,514
2011	1,404	6	1,410
2012	1,453	10	1,463
2013	1,327	8	1,335
2014	1,209	5	1,214
2015	1,159	6	1,165
2016 <sup>**</sup>	989	2	991
<b>TOTAL</b>	<b>59,858</b>	<b>749</b>	<b>60,607</b>

<sup>^</sup> HIV Infection Without AIDS became a reportable condition in Pennsylvania in October 2002

\*Cases diagnosed with HIV disease before age 13

\*\*Count may be incomplete partly due to reporting delays.



**Table 2**  
**Number of Cases of HIV Disease Diagnosed in Pennsylvania**  
**by Sex, Race/Ethnicity and Year of Diagnosis, 2010-2016**

	2011		2012		2013		2014		2015		2016*		TOTAL TO DATE 1980-2016	
	number	percent	number	percent	number	percent	number	percent	number	percent	number	percent	number	percent
<b>TOTAL MALE</b>	<b>1,094</b>	<b>100</b>	<b>1,095</b>	<b>100</b>	<b>1,058</b>	<b>100</b>	<b>953</b>	<b>100</b>	<b>902</b>	<b>100</b>	<b>754</b>	<b>100</b>	<b>45,603</b>	<b>100</b>
White (non-Hispanic)	345	32	337	31	317	30	306	32	285	32	253	34	17,108	38
Black/African American (non-Hispanic)	538	49	556	51	545	52	472	50	464	51	335	44	21,104	46
Hispanic	177	16	164	15	136	13	128	13	120	13	136	18	5,886	13
Asian/Pacific	9	1	15	1	21	2	19	2	16	2	14	2	289	1
Native American	0	0	2	0	5	0	4	0	2	0	1	0	40	0
Multirace	25	2	21	2	34	3	24	3	15	2	15	2	1,176	3
<b>TOTAL FEMALE</b>	<b>316</b>	<b>100</b>	<b>368</b>	<b>100</b>	<b>277</b>	<b>100</b>	<b>261</b>	<b>100</b>	<b>263</b>	<b>100</b>	<b>237</b>	<b>100</b>	<b>15,004</b>	<b>100</b>
White (non-Hispanic)	64	6	66	6	60	6	54	6	59	7	46	6	3,226	7
Black/African American (non-Hispanic)	215	20	230	21	178	17	161	17	165	18	143	19	8,828	19
Hispanic	28	3	55	5	27	3	38	4	32	4	40	5	2,341	5
Asian/Pacific	5	0	6	1	7	1	4	0	5	1	3	0	82	0
Native American	0	0	1	0	0	0	0	0	0	0	2	0	19	0
Multirace	4	0	10	1	5	0	4	0	2	0	3	0	508	1
<b>TOTAL</b>	<b>1,410</b>	<b>100</b>	<b>1,463</b>	<b>100</b>	<b>1,335</b>	<b>100</b>	<b>1,214</b>	<b>100</b>	<b>1,165</b>	<b>100</b>	<b>991</b>	<b>100</b>	<b>60,607</b>	<b>100</b>

\*Count may be incomplete partly due to reporting delays.

Note: Percentages may not add to 100% due to rounding.

**Table 3**  
 Number of Cases of HIV Disease Diagnosed in Pennsylvania  
 by Age and Year of Diagnosis, 2011-2016

	2011		2012		2013		2014		2015		2016*		TOTAL TO DATE 1980-2016	
	number	percent	number	percent	number	percent	number	percent	number	percent	number	percent	number	percent
<b>All Ages</b>	1,410	100	1,463	100	1,335	100	1,214	100	1,165	100	991	100	60,607	100
<b>0-12</b>	6	0	10	1	8	1	5	0	6	1	2	0	749	1
<b>13-19</b>	73	5	71	5	72	5	62	5	59	5	47	5	1,914	3
<b>20-29</b>	410	29	461	32	407	30	393	32	416	36	362	37	14,820	24
<b>30-39</b>	314	22	304	21	303	23	271	22	258	22	244	25	20,981	35
<b>40-49</b>	340	24	329	22	269	20	230	19	193	17	159	16	14,410	24
<b>OVER 49</b>	267	19	288	20	276	21	253	21	233	20	177	18	7,733	13

\*Count may be incomplete partly due to reporting delays.

**Table 4**  
 Number of Cases of HIV Disease in Pennsylvania  
 by Mode of Transmission and Year of Diagnosis, 2011-2016

	2011		2012		2013		2014		2015		2016		TOTAL TO DATE 1980-2016	
	number	percent	number	percent	number	percent	number	percent	number	percent	number	percent	number	percent
All Modes	1,410	100	1,463	100	1,335	100	1,214	100	1,165	100	991	100	60,607	100
Men Sex w/Men (MSM)	625	44	649	44	646	48	612	50	623	53	518	52	22,778	38
Injecting Drug Use (IDU)	119	8	121	8	94	7	66	5	60	5	49	5	15,512	26
MSM & IDU	35	2	33	2	30	2	27	2	24	2	23	2	2,923	5
Coagulation Disorder	0	0	0	0	0	0	0	0	0	0	0	0	263	0
Heterosexual Contact	519	37	476	33	444	33	433	36	320	27	244	25	14,988	25
Tranfusion Received	0	0	0	0	0	0	0	0	0	0	0	0	221	0
Undetermined/Other	7	0	10	1	10	1	5	0	7	1	3	0	765	1
All Pediatric Modes**	105	7	174	12	111	8	71	6	131	11	154	16	3,157	5

\*Reduced numbers may be partially due to reporting delays.

\*\*Includes adult cases that had pediatric modes of transmission (e.g., perinatal exposure)

Note: Percentages may not add to 100% due to rounding.

**Table 5**  
**HIV Disease by Race/Ethnicity and Mode of Transmission in Pennsylvania, 1980-1990, 1991-2000 and 2001-2016**

	White (non-Hispanic)		Black/African American (non-Hispanic)		Hispanic		Asian/Pacific		Native American		Multirace		All Races	
	number	percent	number	percent	number	percent	number	percent	number	percent	number	percent	number	percent
<b>1980-1990</b>														
All Modes	5,528	100	4,292	100	1,312	100	25	100	5	100	142	100	11,304	100
Men Sex w/Men (MSM)	3,787	69	1,764	41	225	17	19	76	2	40	56	39	5,853	52
Injecting Drug Use (IDU)	706	13	1,564	36	792	60	1	4	2	40	51	36	3,116	28
MSM & IDU	331	6	431	10	94	7	1	4	0	0	27	19	884	8
Coagulation Disorder	191	3	10	0	6	0	0	0	0	0	0	0	207	2
Heterosexual Contact	229	4	333	8	143	11	2	8	0	0	7	5	714	6
Transfusion Received	118	2	18	0	3	0	1	4	0	0	0	0	140	1
All Pediatric Modes	57	1	70	2	29	2	0	0	1	20	1	1	158	1
Undetermined/Other	109	2	102	2	20	2	1	4	0	0	0	0	232	2
<b>1991-2000</b>														
All Modes	6,892	100	11,774	100	2,911	100	67	100	15	100	532	100	22,191	100
Men Sex w/Men (MSM)	3,720	54	2,821	24	386	13	31	46	7	47	138	26	7,103	32
Injecting Drug Use (IDU)	1,540	22	4,912	42	1,431	49	5	7	2	13	216	41	8,106	37
MSM & IDU	339	5	684	6	145	5	1	1	1	7	48	9	1,218	5
Coagulation Disorder	42	1	3	0	1	0	0	0	0	0	1	0	47	0
Heterosexual Contact	907	13	2,778	24	732	25	17	25	3	20	105	20	4,542	20
Transfusion Received	42	1	21	0	4	0	5	7	0	0	1	0	73	0
All Pediatric Modes	55	1	256	2	82	3	2	3	0	0	9	2	404	2
Undetermined/Other	247	4	299	3	130	4	6	9	2	13	14	3	698	3
<b>2001-2016*</b>														
All Modes	7,914	100	13,866	100	4,004	100	279	100	39	100	1,010	100	27,112	100
Men Sex w/Men (MSM)	4,119	52	4,198	30	1,036	26	118	42	14	36	337	33	9,822	36
Injecting Drug Use (IDU)	1,046	13	2,063	15	983	25	13	5	2	5	183	18	4,290	16
MSM & IDU	322	4	300	2	140	3	5	2	1	3	53	5	821	3
Coagulation Disorder	6	0	1	0	2	0	0	0	0	0	0	0	9	0
Heterosexual Contact	1,685	21	6,165	44	1,404	35	105	38	21	54	352	35	9,732	36
Transfusion Received	3	0	4	0	1	0	0	0	0	0	0	0	8	0
All Pediatric Modes	23	0	125	1	41	1	5	2	0	0	9	1	203	1
Undetermined/Other	710	9	1,010	7	397	10	33	12	1	3	76	8	2,227	8

\* The more recent pattern, 2001-2016, is a better reflection of current distribution of cases than the earlier periods, 1980-1990 and 1991-2000.

Note: Percentages may not add to 100% due to rounding.

**Table 5A**  
**HIV Disease for Males by Mode of Transmission by Race/Ethnicity 1980-1990, 1991-2000 and 2001-2016**

	White (non-Hispanic)		Black/African American (non-Hispanic)		Hispanic		Asian/Pacific		Native American		Multirace		All Races	
	number	percent	number	percent	number	percent	number	percent	number	percent	number	percent	number	percent
<b>1980-1990</b>														
All Modes	5,041	100	3,568	100	1,018	100	22	100	2	100	118	100	9,769	100
Men Sex w/Men (MSM)	3,787	75	1,764	49	225	22	19	86	2	100	56	47	5,853	60
Injecting Drug Use (IDU)	458	9	1,118	31	624	61	0	0	0	0	33	28	2,233	23
MSM & IDU	331	7	431	12	94	9	1	5	0	0	27	23	884	9
Coagulation Disorder	188	4	9	0	6	1	0	0	0	0	0	0	203	2
Heterosexual Contact	78	2	120	3	33	3	1	5	0	0	1	1	233	2
Transfusion Received	68	1	7	0	3	0	0	0	0	0	0	0	78	1
All Pediatric Modes	47	1	44	1	21	2	0	0	0	0	1	1	113	1
Undetermined/Other	84	2	75	2	12	1	1	5	0	0	0	0	172	2
<b>1991-2000</b>														
All Modes	5,662	100	8,226	100	1,955	100	50	100	11	100	365	100	16,269	100
Men Sex w/Men (MSM)	3,720	66	2,821	34	386	20	31	62	7	64	138	38	7,103	44
Injecting Drug Use (IDU)	970	17	3,379	41	1,084	55	3	6	1	9	129	35	5,566	34
MSM & IDU	339	6	684	8	145	7	1	2	1	9	48	13	1,218	7
Coagulation Disorder	40	1	3	0	1	0	0	0	0	0	1	0	45	0
Heterosexual Contact	371	7	1,019	12	218	11	7	14	1	9	43	12	1,659	10
Transfusion Received	26	0	9	0	2	0	3	6	0	0	0	0	40	0
All Pediatric Modes	34	1	123	1	50	3	1	2	0	0	2	1	210	1
Undetermined/Other	162	3	188	2	69	4	4	8	1	9	4	1	428	3
<b>2001-2016*</b>														
All Modes	6,405	100	9,310	100	2,913	100	217	100	27	100	693	100	19,565	100
Men Sex w/Men (MSM)	4,119	64	4,198	45	1,036	36	118	54	14	52	337	49	9,822	50
Injecting Drug Use (IDU)	618	10	1,341	14	772	27	11	5	0	0	113	16	2,855	15
MSM & IDU	322	5	300	3	140	5	5	2	1	4	53	8	821	4
Coagulation Disorder	5	0	0	0	2	0	0	0	0	0	0	0	7	0
Heterosexual Contact	885	14	2,894	31	694	24	64	29	12	44	152	22	4,701	24
Transfusion Received	2	0	0	0	1	0	0	0	0	0	0	0	3	0
All Pediatric Modes	9	0	62	1	23	1	0	0	0	0	4	1	98	1
Undetermined/Other	445	7	515	6	245	8	19	9	0	0	34	5	1,258	6

\* The more recent pattern, 2001-2016, is a better reflection of current distribution of cases than the earlier periods, 1980-1990 and 1991-2000.

Note: Percentages may not add to 100% due to rounding.

**Table 5B**  
**HIV Disease for Females by Mode of Transmission by Race/Ethnicity 1980-1990, 1991-2000 and 2001-2016**

	White (non-Hispanic)		Black/African American (non-Hispanic)		Hispanic		Asian/Pacific		Native American		Multirace		All Races	
	number	percent	number	percent	number	percent	number	percent	number	percent	number	percent	number	percent
<b>1980-1990</b>														
All Modes	487	100	724	100	294	100	3	100	3	100	24	100	1,535	100
Men Sex w/Men (MSM)	0	0	0	0	0	0	0	0	0	0	0	0	0	0
Injecting Drug Use (IDU)	248	51	446	62	168	57	1	33	2	67	18	75	883	58
MSM & IDU	0	0	0	0	0	0	0	0	0	0	0	0	0	0
Coagulation Disorder	3	1	1	0	0	0	0	0	0	0	0	0	4	0
Heterosexual Contact	151	31	213	29	110	37	1	33	0	0	6	25	481	31
Transfusion Received	50	10	11	2	0	0	1	33	0	0	0	0	62	4
All Pediatric Modes	10	2	26	4	8	3	0	0	1	33	0	0	45	3
Undetermined/Other	25	5	27	4	8	3	0	0	0	0	0	0	60	4
<b>1991-2000</b>														
All Modes	1,230	100	3,548	100	956	100	17	100	4	100	167	100	5,922	100
Men Sex w/Men (MSM)	0	0	0	0	0	0	0	0	0	0	0	0	0	0
Injecting Drug Use (IDU)	570	46	1,533	43	347	36	2	12	1	25	87	52	2,540	43
MSM & IDU	0	0	0	0	0	0	0	0	0	0	0	0	0	0
Coagulation Disorder	2	0	0	0	0	0	0	0	0	0	0	0	2	0
Heterosexual Contact	536	44	1,759	50	514	54	10	59	2	50	62	37	2,883	49
Transfusion Received	16	1	12	0	2	0	2	12	0	0	1	1	33	1
All Pediatric Modes	21	2	133	4	32	3	1	6	0	0	7	4	194	3
Undetermined/Other	85	7	111	3	61	6	2	12	1	25	10	6	270	5
<b>2001-2016*</b>														
All Modes	1,509	100	4,556	100	1,091	100	62	100	12	100	317	100	7,547	100
Men Sex w/Men (MSM)	0	0	0	0	0	0	0	0	0	0	0	0	0	0
Injecting Drug Use (IDU)	428	28	722	16	211	19	2	3	2	17	70	22	1,435	19
MSM & IDU	0	0	0	0	0	0	0	0	0	0	0	0	0	0
Coagulation Disorder	1	0	1	0	0	0	0	0	0	0	0	0	2	0
Heterosexual Contact	800	53	3,271	72	710	65	41	66	9	75	200	63	5,031	67
Transfusion Received	1	0	4	0	0	0	0	0	0	0	0	0	5	0
All Pediatric Modes	14	1	63	1	18	2	5	8	0	0	5	2	105	1
Undetermined/Other	265	18	495	11	152	14	14	23	1	8	42	13	969	13

\* The more recent pattern, 2001-2016, is a better reflection of current distribution of cases than the earlier periods, 1980-1990 and 1991-2000.

Note: Percentages may not add to 100% due to rounding.

**Table 6**

Cumulative Cases for HIV Disease in Pennsylvania  
by Mortality Status and County of Residence, 1980-2016

COUNTY	PRESUMED	REPORTED	CUMULATIVE CASES
	ALIVE	DEAD	
Philadelphia	18,259	13,727	31,986
Allegheny	2,910	1,953	4,863
Delaware	1,736	1,272	3,008
Montgomery	1,131	762	1,893
Dauphin	1,054	707	1,761
Berks	1,027	630	1,657
Lehigh	1,053	531	1,584
Lancaster	881	557	1,438
Bucks	819	567	1,386
York	807	472	1,279
Chester	544	469	1,013
Northampton	408	282	690
Luzerne	374	255	629
Cumberland	387	216	603
Erie	343	207	550
Lackawanna	307	181	488
Monroe	299	183	482
Lycoming	226	179	405
Westmoreland	176	172	348
Centre	184	72	256
Lebanon	147	102	249
Schuylkill	140	93	233
Cambria	128	97	225
Franklin	141	83	224
Beaver	108	110	218
Washington	111	104	215
Union	127	51	178
Blair	82	79	161
Fayette	99	50	149
Northumberland	80	62	142
Pike	97	40	137
Adams	83	53	136
Butler	85	48	133
Mercer	74	59	133
Somerset	88	45	133

COUNTY	PRESUMED	REPORTED	CUMULATIVE CASES
	ALIVE	DEAD	
Carbon	83	45	128
Wayne	67	58	125
Huntingdon	72	43	115
Crawford	68	42	110
Clearfield	71	37	108
Lawrence	55	46	101
Columbia	61	31	92
Bradford	39	32	71
Armstrong	37	33	70
Indiana	39	30	69
Mckean	29	22	51
Perry	33	18	51
Greene	24	24	48
Venango	21	27	48
Bedford	28	19	47
Tioga	21	19	40
Mifflin	19	17	36
Susquehanna	20	16	36
Warren	23	11	34
Montour	18	12	30
Snyder	20	9	29
Clarion	22	6	28
Jefferson	16	10	26
Wyoming	12	14	26
Clinton	15	9	24
Juniata	16	8	24
Forest	12	2	14
Elk	7	4	11
Fulton	10	1	11
Sullivan	8	2	10
Potter	2	7	9
Cameron	0	0	0
STATE TOTAL	35,483	25,124	60,607

**Table 7**  
Annual Diagnoses of HIV Disease in Pennsylvania  
By County of Residence  
2013-2016

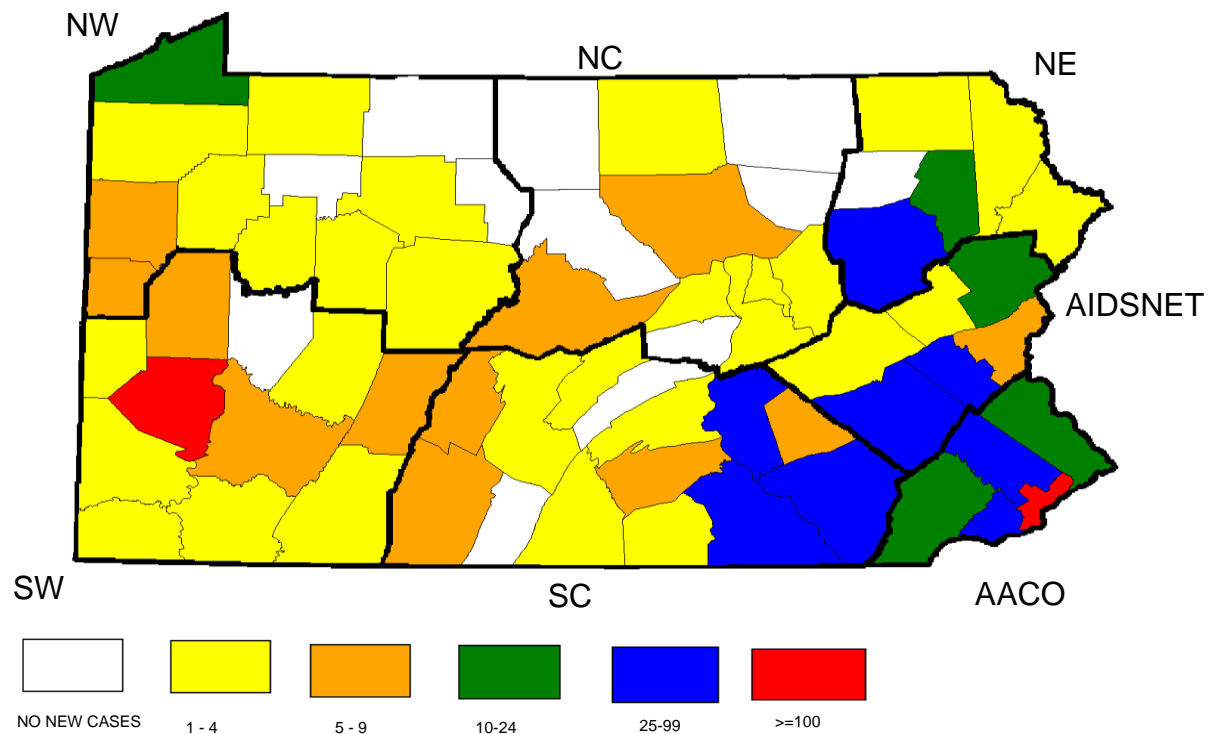
County	2013	2014	2015	2016*	2015 Rate Per 100,000**
Adams	1	5	2	7	1.96
Allegheny	119	128	142	127	11.54
Armstrong	0	2	0	3	0.00
Beaver	4	5	3	0	1.78
Bedford	0	0	5	2	10.29
Berks	34	33	29	30	6.98
Blair	3	5	5	5	3.98
Bradford	0	0	0	5	0.00
Bucks	37	30	24	19	3.83
Butler	3	4	7	2	3.75
Cambria	4	6	5	4	3.67
Cameron	0	0	0	0	0.00
Carbon	1	7	2	5	3.13
Centre	8	5	8	12	4.98
Chester	19	21	14	18	2.71
Clarion	0	0	1	0	2.53
Clearfield	1	6	4	0	4.94
Clinton	0	1	0	1	0.00
Columbia	1	1	2	4	3.00
Crawford	0	2	1	4	1.16
Cumberland	16	9	7	12	2.84
Dauphin	33	37	34	49	12.45
Delaware	76	72	69	61	12.24
Elk	0	0	1	0	3.24
Erie	14	12	15	13	5.39
Fayette	7	5	3	6	2.25
Forest	0	0	0	0	0.00
Franklin	7	9	3	4	1.95
Fulton	1	0	0	0	0.00
Greene	1	1	1	0	2.67
Huntingdom	1	0	3	1	6.57
Indiana	1	0	1	1	1.15
Jefferson	0	0	1	0	2.25
Juniata	0	0	0	0	0.00
Lackawanna	12	9	11	13	5.19

County	2013	2014	2015	2016*	2015 RATE PER 100,000**
Lancaster	34	27	35	31	6.52
Lawrence	3	5	5	0	5.68
Lebanon	6	6	6	9	4.38
Lehigh	40	41	27	39	7.49
Luzerne	17	17	26	17	8.16
Lycoming	4	4	5	5	4.31
Mckean	2	1	0	1	0.00
Mercer	2	4	7	0	6.13
Mifflin	1	0	1	0	2.15
Monroe	17	9	11	10	6.61
Montgomery	70	46	36	23	4.39
Montour	0	1	1	1	5.39
Northampton	25	5	9	4	2.99
Northumberland	3	2	3	2	3.22
Perry	2	2	2	0	4.38
Philadelphia	637	563	534	382	34.07
Pike	12	4	2	2	3.57
Potter	1	0	0	0	0.00
Schuylkill	6	3	3	5	2.07
Snyder	0	1	0	2	0.00
Somerset	2	2	2	2	2.65
Sullivan	0	1	0	1	0.00
Susquehanna	0	2	1	0	2.40
Tioga	0	0	1	0	2.39
Union	2	1	2	0	4.45
Venango	1	0	2	1	3.77
Warren	0	0	1	0	2.48
Washington	9	3	1	4	0.48
Wayne	3	5	3	0	5.86
Westmoreland	3	16	8	3	2.23
Wyoming	1	0	0	0	0.00
York	28	28	28	39	6.32
STATE TOTAL	1,335	1,214	1,165	991	9.10

\*Count may be incomplete partly due to reporting delays.

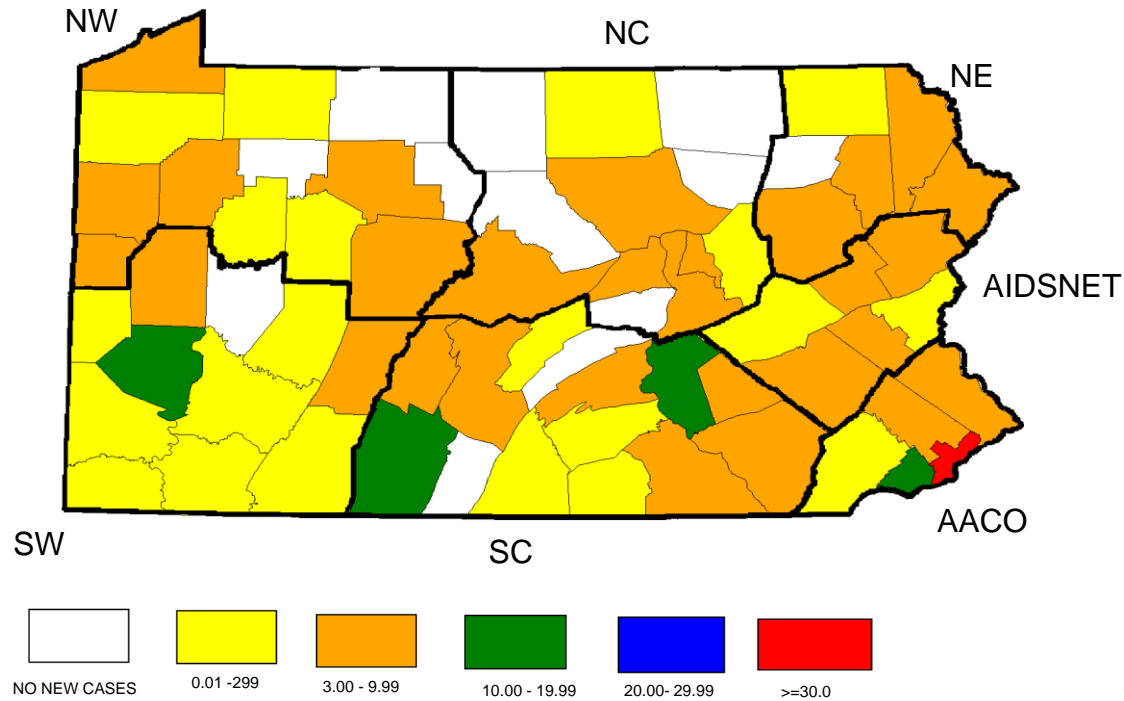


**Figure 3**  
 New HIV Disease Diagnosed in Pennsylvania  
 Number of Cases by County, 2015



AACO=AIDS Activities Coordinating Office  
 AIDSNET = AIDSNET  
 NE = Northeastern Wyoming Valley  
 NC = North Central District AIDS Coalition  
 SC = Family Health Council of South Central Pennsylvania  
 SW = Southwest Pennsylvania - Jewish Healthcare Foundation  
 NW = Northwest Pennsylvania Rural AIDS Alliance

**Figure 4**  
HIV Disease Diagnosed in Pennsylvania  
Rate\* (per 100,000) by County, 2015



AACO=AIDS Activities Coordinating Office  
AIDSNET = AIDSNET  
NE = Northeastern Wyoming Valley  
NC = North Central District AIDS Coalition  
SC = Family Health Council of South Central Pennsylvania  
SW = Southwest Pennsylvania - Jewish Healthcare Foundation  
NW = Northwest Pennsylvania Rural AIDS Alliance

\* Rates are based on 2015 estimated population.

**Table 8**  
HIV Disease in Pennsylvania  
Characteristics of Cases by Interval of Diagnosis, 2011-2016

		BEFORE 2011		2011		2012		2013		2014		2015		2016		TOTAL TO DEC 31, 2016*		CURRENTLY LIVING DEC 31, 2016	
		number	percent	number	percent	number	percent	number	percent	number	percent	number	percent	number	percent	number	percent	number	percent
	TOTAL CASES	53,030	100	1,410	100	1,462	100	1,335	100	1,214	100	1,165	100	991	100	60,607	100	35,483	100
SEX	MALE	39,748	75	1,094	78	1,094	75	1,058	79	953	79	902	77	754	76	45,603	75	25,630	72
	FEMALE	13,282	25	316	22	368	25	277	21	261	21	263	23	237	24	15,004	25	9,853	28
RACE/ETHNICITY	WHITE	18,143	34	409	29	402	27	377	28	360	30	344	30	299	30	20,334	34	10,969	31
	BLACK/AFRICAN AMERICAN	25,930	49	753	53	786	54	723	54	633	52	629	54	478	48	29,932	49	17,399	49
	HISPANIC	7,146	13	205	15	219	15	163	12	166	14	152	13	176	18	8,227	14	5,509	16
	ASIAN/PACIFIC	247	0	14	1	21	1	28	2	23	2	21	2	17	2	371	1	304	1
	NATIVE AMERICAN	42	0	0	0	3	0	5	0	4	0	2	0	3	0	59	0	45	0
	MULTIRACE	1,522	3	29	2	31	2	39	3	28	2	17	1	18	2	1,684	3	1,257	4
AGE (YEARS)	< 13	712	1	6	0	10	1	8	1	5	0	6	1	2	0	749	1	558	2
	13 - 19	1,530	3	73	5	71	5	72	5	62	5	59	5	47	5	1,914	3	1,580	4
	20 - 29	12,372	23	410	29	460	31	407	30	393	32	416	36	362	37	14,820	24	10,067	28
	30 - 39	19,287	36	314	22	304	21	303	23	271	22	258	22	244	25	20,981	35	11,536	33
	40 - 49	12,890	24	340	24	329	23	269	20	230	19	193	17	159	16	14,410	24	7,981	22
	Over 49	6,239	12	267	19	288	20	276	21	253	21	233	20	177	18	7,733	13	3,761	11
2001-2016*	MEN SEX W/MEN (MSM)	19,106	36	625	44	648	44	646	48	612	50	623	53	518	52	22,778	38	13,410	38
	INJECTING DRUG USE(IDU)	15,003	28	119	8	121	8	94	7	66	5	60	5	49	5	15,512	26	6,844	19
	MSM & IDU	2,751	5	35	2	33	2	30	2	27	2	24	2	23	2	2,923	5	1,419	4
	COAGULATION DISORDER	263	0	0	0	0	0	0	0	0	0	0	0	0	0	263	0	63	0
	HETEROSEXUAL CONTACT	12,552	24	519	37	476	33	444	33	433	36	320	27	244	25	14,988	25	10,890	31
	TRANSFUSION	221	0	0	0	0	0	0	0	0	0	0	0	0	0	221	0	30	0
	ALL PEDIATRIC	723	1	7	0	10	1	10	1	5	0	7	1	3	0	765	1	572	2
	UNDETERMINED/OTHER	2,411	5	105	7	174	12	111	8	71	6	131	11	154	16	3,157	5	2,255	6
COALITION AREA	AIDS ACTIVITIES COORDINATING OFFICE	34,694	65	888	63	953	65	839	63	732	60	677	58	503	51	39,286	65	22,489	63
	AIDSNET	4,162	8	102	7	115	8	123	9	98	8	81	7	93	9	4,774	8	3,010	8
	NORTHEAST WYOMING VALLEY	1,212	2	36	3	36	2	45	3	37	3	43	4	32	3	1,441	2	877	2
	NORTH CENTRAL DISTRICT AIDS COALITION	1,145	2	21	1	29	2	19	1	17	1	22	2	33	3	1,286	2	801	2
	FAMILY HEALTH COUNCIL OF SOUTH CENTRAL PENNSYLVANIA	5,286	10	166	12	132	9	133	10	128	11	131	11	159	16	6,135	10	3,760	11
	SOUTHWESTERN PENNSYLVANIA - JEWISH HEALTHCARE FOUNDATION	5,479	10	168	12	174	12	153	11	172	14	173	15	152	15	6,471	11	3,805	11
	NORTHWEST PENNSYLVANIA RURAL AIDS ALLIANCE	1,052	2	29	2	23	2	23	2	30	2	38	3	19	2	1,214	2	741	2

\* Includes cases diagnosed prior to 2002

Cummulative are cases diagnosed through December 31, 2016, and reported through March 31, 2017.

Note: Percentages may not add to 100% due to rounding.

**Table 9**  
HIV Disease in Pennsylvania  
Characteristics of Cases by Time Interval of Diagnosis

AIDS Activities Coordinating Office  
Bucks, Delaware, Chester, Montgomery and Philadelphia Counties

		BEFORE 2011		2011		2012		2013		2014		2015		2016		TOTAL TO DEC 31, 2016*		CURRENTLY LIVING DEC 31, 2016	
		number	percent	number	percent	number	percent	number	percent	number	percent	number	percent	number	percent	number	percent	number	percent
	TOTAL CASES	34,694	100	888	100	953	100	839	100	732	100	677	100	503	100	39,286	100	22,489	100
SEX	MALE	25,828	74	675	76	709	74	676	81	576	79	522	77	370	74	29,356	75	16,078	71
	FEMALE	8,866	26	213	24	244	26	163	19	156	21	155	23	133	26	9,930	25	6,411	29
RACE/ETHNICITY	WHITE	8,810	25	185	21	181	19	155	18	148	20	107	16	90	18	9,676	25	5,012	22
	BLACK/AFRICAN AMERICAN	20,951	60	567	64	610	64	552	66	464	63	462	68	313	62	23,919	61	13,578	60
	HISPANIC	3,916	11	116	13	132	14	89	11	90	12	87	13	86	17	4,516	11	3,023	13
	ASIAN/PACIFIC	185	1	10	1	14	1	20	2	14	2	12	2	6	1	261	1	212	1
	NATIVE AMERICAN	29	0	0	0	3	0	5	1	4	1	2	0	2	0	45	0	38	0
	MULTIRACE	803	2	10	1	13	1	18	2	12	2	7	1	6	1	869	2	626	3
AGE (YEARS)	< 13	471	1	3	0	6	1	5	1	2	0	2	0	0	0	489	1	376	2
	13 - 19	1,034	3	52	6	47	5	52	6	37	5	37	5	30	6	1,289	3	1,074	5
	20 - 29	8,116	23	267	30	329	35	275	33	254	35	238	35	183	36	9,662	25	6,538	29
	30 - 39	12,407	36	198	22	189	20	181	22	153	21	157	23	119	24	13,404	34	7,188	32
	40 - 49	8,433	24	211	24	204	21	157	19	130	18	107	16	81	16	9,323	24	4,982	22
	Over 49	4,233	12	157	18	178	19	169	20	156	21	136	20	90	18	5,119	13	2,331	10
MODE OF TRANSMISSION	MSM	11,914	34	366	41	400	42	409	49	371	51	369	55	264	52	14,093	36	8,160	36
	IDU	10,351	30	84	9	85	9	48	6	40	5	32	5	28	6	10,668	27	4,523	20
	MSM/IDU	1,785	5	23	3	24	3	19	2	16	2	8	1	9	2	1,884	5	892	4
	COAGULATION DISORDER	65	0	0	0	0	0	0	0	0	0	0	0	0	0	65	0	18	0
	HETEROSEXUAL	9,085	26	387	44	386	41	335	40	291	40	245	36	187	37	10,916	28	7,845	35
	TRANSFUSION	99	0	0	0	0	0	0	0	0	0	0	0	0	0	99	0	10	0
	PEDIATRIC	472	1	4	0	6	1	6	1	2	0	2	0	1	0	493	1	378	2
	UNDETERMINED MODE	923	3	24	3	52	5	22	3	12	2	21	3	14	3	1,068	3	663	3
COUNTY	BUCKS	1,189	3	44	5	43	5	37	4	30	4	24	4	19	4	1,386	4	819	4
	CHESTER	875	3	32	4	34	4	19	2	21	3	14	2	18	4	1,013	3	544	2
	DELAWARE	2,548	7	89	10	93	10	76	9	72	10	69	10	61	12	3,008	8	1,736	8
	MONTGOMERY	1,629	5	41	5	48	5	70	8	46	6	36	5	23	5	1,893	5	1,131	5
	PHILADELPHIA	28,453	82	682	77	735	77	637	76	563	77	534	79	382	76	31,986	81	18,259	81

\* Includes cases diagnosed prior to 2002

Cummulative are cases diagnosed through December 31, 2016, and reported through March 31, 2017.

Note: Percentages may not add to 100% due to rounding.

**Table 10**  
HIV Disease in Pennsylvania  
Characteristics of Cases by Time Interval of Diagnosis

AIDSNET  
Berks, Carbon, Lehigh, Monroe, Northampton and Schuylkill Counties

		BEFORE 2011		2011		2012		2013		2014		2015		2016		TOTAL TO DEC 31, 2016*		CURRENTLY LIVING DEC 31, 2016	
		number	percent	number	percent	number	percent	number	percent	number	percent	number	percent	number	percent	number	percent	number	percent
	TOTAL CASES	4,162	100	102	100	115	100	123	100	98	100	81	100	93	100	4,774	100	3,010	100
SEX	MALE	2,816	68	76	75	82	71	93	76	64	65	60	74	62	67	3,253	68	1,962	65
	FEMALE	1,346	32	26	25	33	29	30	24	34	35	21	26	31	33	1,521	32	1,048	35
RACE/ETHNICITY	WHITE	1,606	39	29	28	37	32	50	41	26	27	39	48	30	32	1,817	38	1,014	34
	BLACK/AFRICAN AMERICAN	739	18	34	33	29	25	33	27	25	26	23	28	30	32	913	19	624	21
	HISPANIC	1,641	39	34	33	46	40	31	25	44	45	17	21	29	31	1,842	39	1,203	40
	ASIAN/PACIFIC	10	0	0	0	1	1	3	2	1	1	0	0	1	1	16	0	12	0
	NATIVE AMERICAN	2	0	0	0	0	0	0	0	0	0	0	0	1	1	3	0	3	0
	MULTIRACE	164	4	5	5	2	2	6	5	2	2	2	2	2	2	183	4	154	5
AGE (YEARS)	< 13	70	2	0	0	1	1	0	0	1	1	0	0	0	0	72	2	53	2
	13 - 19	108	3	1	1	6	5	3	2	5	5	3	4	1	1	127	3	100	3
	20 - 29	943	23	26	25	29	25	25	20	20	20	18	22	29	31	1,090	23	751	25
	30 - 39	1,559	37	21	21	23	20	26	21	24	24	15	19	23	25	1,691	35	979	33
	40 - 49	1,032	25	25	25	23	20	37	30	28	29	20	25	17	18	1,182	25	742	25
	Over 49	450	11	29	28	33	29	32	26	20	20	25	31	23	25	612	13	385	13
MODE OF TRANSMISSION	MSM	1,015	24	38	37	43	37	47	38	32	33	35	43	33	35	1,243	26	770	26
	IDU	1,381	33	12	12	14	12	8	7	8	8	0	0	2	2	1,425	30	722	24
	MSM/IDU	170	4	4	4	4	3	6	5	3	3	4	5	1	1	192	4	114	4
	COAGULATION DISORDER	38	1	0	0	0	0	0	0	0	0	0	0	0	0	38	1	11	0
	HETEROSEXUAL	994	24	33	32	32	28	36	29	40	41	19	23	18	19	1,172	25	868	29
	TRANSFUSION	19	0	0	0	0	0	0	0	0	0	0	0	0	0	19	0	4	0
	PEDIATRIC	76	2	0	0	1	1	0	0	1	1	0	0	0	0	78	2	59	2
	UNDETERMINED MODE	469	11	15	15	21	18	26	21	14	14	23	28	39	42	607	13	462	15
COUNTY	BERKS	1,464	35	27	26	40	35	34	28	33	34	29	36	30	32	1,657	35	1,027	34
	CARBON	102	2	4	4	7	6	1	1	7	7	2	2	5	5	128	3	83	3
	LEHIGH	1,345	32	50	49	42	37	40	33	41	42	27	33	39	42	1,584	33	1,053	35
	MONROE	411	10	10	10	14	12	17	14	9	9	11	14	10	11	482	10	299	10
	NORTHAMPTON	636	15	7	7	4	3	25	20	5	5	9	11	4	4	690	14	408	14
	SCHUYLKILL	204	5	4	4	8	7	6	5	3	3	3	4	5	5	233	5	140	5

\* Includes cases diagnosed prior to 2002

Cummulative are cases diagnosed through December 31, 2016, and reported through March 31, 2017.

Note: Percentages may not add to 100% due to rounding.

**Table 11**  
HIV Disease in Pennsylvania  
Characteristics of Cases by Time Interval of Diagnosis

**NORTHEAST WYOMING VALLEY**  
Lackawanna, Luzerne, Pike, Susquehanna, Wayne and Wyoming Counties

		BEFORE 2011		2011		2012		2013		2014		2015		2016		TOTAL TO DEC 31, 2016*		CURRENTLY LIVING DEC 31, 2016	
		number	percent	number	percent	number	percent	number	percent	number	percent	number	percent	number	percent	number	percent	number	percent
	TOTAL CASES	1,212	100	36	100	36	100	45	100	37	100	43	100	32	100	1,441	100	877	100
SEX	MALE	936	77	28	78	28	78	28	62	22	59	34	79	27	84	1,103	77	633	72
	FEMALE	276	23	8	22	8	22	17	38	15	41	9	21	5	16	338	23	244	28
RACE/ETHNICITY	WHITE	745	61	20	56	23	64	22	49	22	59	23	53	15	47	870	60	478	55
	BLACK/AFRICAN AMERICAN	242	20	9	25	8	22	13	29	8	22	5	12	6	19	291	20	194	22
	HISPANIC	166	14	7	19	5	14	7	16	6	16	15	35	9	28	215	15	159	18
	ASIAN/PACIFIC	4	0	0	0	0	0	0	0	0	0	0	0	1	3	5	0	5	1
	NATIVE AMERICAN	4	0	0	0	0	0	0	0	0	0	0	0	0	0	4	0	2	0
	MULTIRACE	51	4	0	0	0	0	3	7	1	3	0	0	1	3	56	4	39	4
AGE (YEARS)	< 13	22	2	0	0	0	0	1	2	0	0	0	0	0	0	23	2	16	2
	13 - 19	29	2	1	3	1	3	0	0	0	0	1	2	0	0	32	2	27	3
	20 - 29	239	20	5	14	8	22	15	33	6	16	13	30	10	31	296	21	206	23
	30 - 39	430	35	11	31	5	14	10	22	11	30	12	28	9	28	488	34	290	33
	40 - 49	359	30	14	39	7	19	12	27	9	24	7	16	6	19	414	29	240	27
	Over 49	133	11	5	14	15	42	7	16	11	30	10	23	7	22	188	13	98	11
MODE OF TRANSMISSION	MSM	394	33	13	36	21	58	15	33	12	32	22	51	16	50	493	34	294	34
	IDU	346	29	4	11	4	11	10	22	3	8	4	9	2	6	373	26	174	20
	MSM/IDU	69	6	1	3	0	0	0	0	0	0	0	0	2	6	72	5	38	4
	COAGULATION DISORDER	13	1	0	0	0	0	0	0	0	0	0	0	0	0	13	1	4	0
	HETEROSEXUAL	230	19	16	44	8	22	15	33	20	54	14	33	8	25	311	22	250	29
	TRANSFUSION	5	0	0	0	0	0	0	0	0	0	0	0	0	0	5	0	1	0
	PEDIATRIC	24	2	0	0	0	0	1	2	0	0	0	0	0	0	25	2	18	2
	UNDETERMINED MODE	131	11	2	6	3	8	4	9	2	5	3	7	4	13	149	10	98	11
COUNTY	LACKAWANNA	415	34	15	42	13	36	12	27	9	24	11	26	13	41	488	34	307	35
	LUZERNE	516	43	18	50	18	50	17	38	17	46	26	60	17	53	629	44	374	43
	PIKE	110	9	3	8	4	11	12	27	4	11	2	5	2	6	137	10	97	11
	SUSQUEHANNA	32	3	0	0	1	3	0	0	2	5	1	2	0	0	36	2	20	2
	WAYNE	114	9	0	0	0	0	3	7	5	14	3	7	0	0	125	9	67	8
	WYOMING	25	2	0	0	0	0	1	2	0	0	0	0	0	0	26	2	12	1

\* Includes cases diagnosed prior to 2002

Cummulative are cases diagnosed through December 31, 2016, and reported through March 31, 2017.

Note: Percentages may not add to 100% due to rounding.

**Table 12**  
HIV Disease in Pennsylvania  
Characteristics of Cases by Time Interval of Diagnosis

**NORTH CENTRAL DISTRICT AIDS COALITION**  
Bradford, Centre, Clinton, Columbia, Lycoming, Montour, Northumberland  
Potter, Snyder, Sullivan, Tioga and Union Counties

		BEFORE 2011		2011		2012		2013		2014		2015		2016		TOTAL TO DEC 31, 2016*		CURRENTLY LIVING DEC 31, 2016	
		number	percent	number	percent	number	percent	number	percent	number	percent	number	percent	number	percent	number	percent	number	percent
	TOTAL CASES	1,145	100	21	100	29	100	19	100	17	100	22	100	33	100	1,286	100	801	100
SEX	MALE	866	76	19	90	25	86	13	68	15	88	20	91	30	91	988	77	615	77
	FEMALE	279	24	2	10	4	14	6	32	2	12	2	9	3	9	298	23	186	23
RACE/ETHNICITY	WHITE	576	50	9	43	6	21	7	37	8	47	15	68	19	58	640	50	365	46
	BLACK/AFRICAN AMERICAN	374	33	6	29	18	62	9	47	8	47	3	14	8	24	426	33	282	35
	HISPANIC	148	13	5	24	4	14	2	11	1	6	2	9	5	15	167	13	110	14
	ASIAN/PACIFIC	7	1	0	0	0	0	0	0	0	0	1	5	1	3	9	1	9	1
	NATIVE AMERICAN	0	0	0	0	0	0	0	0	0	0	0	0	0	0	0	0	0	0
	MULTIRACE	40	3	1	5	1	3	1	5	0	0	1	5	0	0	44	3	35	4
AGE (YEARS)	< 13	13	1	0	0	1	3	0	0	1	6	1	5	0	0	16	1	13	2
	13 - 19	25	2	0	0	2	7	1	5	1	6	2	9	1	3	32	2	28	3
	20 - 29	262	23	4	19	9	31	5	26	6	35	6	27	16	48	308	24	211	26
	30 - 39	447	39	4	19	5	17	4	21	4	24	6	27	8	24	478	37	277	35
	40 - 49	273	24	9	43	6	21	3	16	2	12	3	14	3	9	299	23	183	23
	Over 49	125	11	4	19	6	21	6	32	3	18	4	18	5	15	153	12	89	11
MODE OF TRANSMISSION	MSM	370	32	8	38	12	41	4	21	11	65	13	59	15	45	433	34	267	33
	IDU	387	34	1	5	4	14	2	11	0	0	1	5	3	9	398	31	208	26
	MSM/IDU	91	8	0	0	0	0	1	5	0	0	1	5	2	6	95	7	53	7
	COAGULATION DISORDER	16	1	0	0	0	0	0	0	0	0	0	0	0	0	16	1	5	1
	HETEROSEXUAL	173	15	7	33	6	21	3	16	3	18	0	0	7	21	199	15	152	19
	TRANSFUSION	7	1	0	0	0	0	0	0	0	0	0	0	0	0	7	1	2	0
	PEDIATRIC	13	1	0	0	1	3	0	0	1	6	2	9	0	0	17	1	14	2
	UNDETERMINED MODE	88	8	5	24	6	21	9	47	2	12	5	23	6	18	121	9	100	12
COUNTY	BRADFORD	61	5	4	19	1	3	0	0	0	0	0	5	15	71	6	39	5	
	CENTRE	212	19	3	14	8	28	8	42	5	29	8	36	12	36	256	20	184	23
	CLINTON	19	2	0	0	3	10	0	0	1	6	0	0	1	3	24	2	15	2
	COLUMBIA	76	7	5	24	3	10	1	5	1	6	2	9	4	12	92	7	61	8
	LYCOMING	375	33	5	24	7	24	4	21	4	24	5	23	5	15	405	31	226	28
	MONTOUR	26	2	0	0	1	3	0	0	1	6	1	5	1	3	30	2	18	2
	NORTHUMBERLAND	131	11	0	0	1	3	3	16	2	12	3	14	2	6	142	11	80	10
	POTTER	8	1	0	0	0	0	1	5	0	0	0	0	0	0	9	1	2	0
	SNYDER	26	2	0	0	0	0	0	0	1	6	0	0	2	6	29	2	20	2
	SULLIVAN	7	1	0	0	1	3	0	0	1	6	0	0	1	3	10	1	8	1
	TIOGA	39	3	0	0	0	0	0	0	0	0	1	5	0	0	40	3	21	3
	UNION	165	14	4	19	4	14	2	11	1	6	2	9	0	0	178	14	127	16

\* Includes cases diagnosed prior to 2002  
Cumulative are cases diagnosed through December 31, 2016, and reported through March 31, 2017.  
Note: Percentages may not add to 100% due to rounding.

**Table 13**  
HIV Disease in Pennsylvania  
Characteristics of Cases by Time Interval of Diagnosis

FAMILY HEALTH COUNCIL OF SOUTH CENTRAL PENNSYLVANIA  
Adams, Bedford, Blair, Cumberland, Dauphin, Franklin, Fulton, Huntingdon,  
Juniata, Lancaster, Lebanon, Mifflin, Perry and York Counties

		BEFORE 2011		2011		2012		2013		2014		2015		2016		TOTAL TO DEC 31, 2016*		CURRENTLY LIVING DEC 31, 2016	
		number	percent	number	percent	number	percent	number	percent	number	percent	number	percent	number	percent	number	percent	number	percent
	TOTAL CASES	5,286	100	166	100	132	100	133	100	128	100	131	100	159	100	6,135	100	3,760	100
SEX	MALE	3,874	73	132	80	90	68	103	77	108	84	103	79	123	77	4,533	74	2,691	72
	FEMALE	1,412	27	34	20	42	32	30	23	20	16	28	21	36	23	1,602	26	1,069	28
RACE/ETHNICITY	WHITE	2,637	50	71	43	57	43	69	52	60	47	61	47	75	47	3,030	49	1,787	48
	BLACK/AFRICAN AMERICAN	1,403	27	55	33	40	30	40	30	45	35	45	34	43	27	1,671	27	1,015	27
	HISPANIC	1,011	19	36	22	25	19	22	17	16	13	18	14	34	21	1,162	19	763	20
	ASIAN/PACIFIC	12	0	2	1	2	2	1	1	1	1	6	5	4	3	28	0	24	1
	NATIVE AMERICAN	4	0	0	0	0	0	0	0	0	0	0	0	0	0	4	0	1	0
	MULTIRACE	219	4	2	1	8	6	1	1	6	5	1	1	3	2	240	4	170	5
AGE (YEARS)	< 13	85	2	3	2	1	1	1	1	1	1	3	2	1	1	95	2	58	2
	13 - 19	159	3	10	6	3	2	9	7	8	6	5	4	8	5	202	3	163	4
	20 - 29	1,178	22	37	22	31	23	30	23	33	26	41	31	50	31	1,400	23	960	26
	30 - 39	2,058	39	40	24	33	25	31	23	31	24	26	20	45	28	2,264	37	1,328	35
	40 - 49	1,219	23	43	26	42	32	34	26	25	20	29	22	32	20	1,424	23	850	23
	Over 49	587	11	33	20	22	17	28	21	30	23	27	21	23	14	750	12	401	11
MODE OF TRANSMISSION	MSM	1,860	35	79	48	55	42	68	51	65	51	59	45	81	51	2,267	37	1,434	38
	IDU	1,490	28	12	7	9	7	15	11	8	6	14	11	10	6	1,558	25	739	20
	MSM/IDU	266	5	3	2	3	2	2	2	5	4	5	4	3	2	287	5	134	4
	COAGULATION DISORDER	53	1	0	0	0	0	0	0	0	0	0	0	0	0	53	1	11	0
	HETEROSEXUAL	1,092	21	39	23	23	17	28	21	32	25	17	13	14	9	1,245	20	901	24
	TRANSFUSION	34	1	0	0	0	0	0	0	0	0	0	0	0	0	34	1	5	0
	PEDIATRIC	86	2	3	2	1	1	2	2	1	1	3	2	1	1	97	2	60	2
	UNDETERMINED MODE	405	8	30	18	41	31	18	14	17	13	33	25	50	31	594	10	476	13
COUNTY	ADAMS	108	2	8	5	5	4	1	1	5	4	2	2	7	4	136	2	83	2
	BEDFORD	34	1	1	1	5	4	0	0	0	0	5	4	2	1	47	1	28	1
	BLAIR	137	3	3	2	3	2	3	2	5	4	5	4	5	3	161	3	82	2
	CUMBERLAND	542	10	8	5	9	7	16	12	9	7	7	5	12	8	603	10	387	10
	DAUPHIN	1,512	29	56	34	40	30	33	25	37	29	34	26	49	31	1,761	29	1,054	28
	FRANKLIN	189	4	8	5	4	3	7	5	9	7	3	2	4	3	224	4	141	4
	FULTON	9	0	1	1		0	1	1	0	0	0	0	0	0	11	0	10	0
	HUNTINGDON	109	2	0	0	1	1	1	1	0	0	3	2	1	1	115	2	72	2
	JUNIATA	23	0	0	0	1	1	0	0	0	0	0	0	0	0	24	0	16	0
	LANCASTER	1,241	23	39	23	31	23	34	26	27	21	35	27	31	19	1,438	23	881	23
	LEBANON	206	4	7	4	9	7	6	5	6	5	6	5	9	6	249	4	147	4
	MIFFLIN	32	1	1	1	1	1	1	1	0	0	1	1	0	0	36	1	19	1
	PERRY	44	1	1	1	0	0	2	2	2	2	2	2	0	0	51	1	33	1
	YORK	1,100	21	33	20	23	17	28	21	28	22	28	21	39	25	1,279	21	807	21

\* Includes cases diagnosed prior to 2002

Cumulative are cases diagnosed through December 31, 2016, and reported through March 31, 2017.

Note: Percentages may not add to 100% due to rounding.



**Table 14**  
HIV Disease in Pennsylvania  
Characteristics of Cases by Time Interval of Diagnosis

**SOUTHWESTERN PENNSYLVANIA - JEWISH HEALTHCARE FOUNDATION**

Allegheny, Armstrong, Beaver, Butler, Cambria, Fayette, Greene,  
Indiana, Somerset, Washington and Westmoreland Counties

		BEFORE 2011		2011		2012		2013		2014		2015		2016		TOTAL TO DEC 31, 2016*		CURRENTLY LIVING DEC 31, 2016	
		number	percent	number	percent	number	percent	number	percent	number	percent	number	percent	number	percent	number	percent	number	percent
	TOTAL CASES	5,479	100	168	100	174	100	153	100	172	100	173	100	152	100	6,471	100	3,805	100
SEX	MALE	4,589	84	137	82	143	82	131	86	140	81	136	79	127	84	5,403	83	3,085	81
	FEMALE	890	16	31	18	31	18	22	14	32	19	37	21	25	16	1,068	17	720	19
RACE/ETHNICITY	WHITE	3,101	57	78	46	88	51	63	41	84	49	74	43	59	39	3,547	55	1,893	50
	BLACK/AFRICAN AMERICAN	1,973	36	76	45	70	40	68	44	73	42	83	48	72	47	2,415	37	1,514	40
	HISPANIC	164	3	4	2	5	3	11	7	4	2	9	5	11	7	208	3	161	4
	ASIAN/PACIFIC	23	0	2	1	4	2	2	1	7	4	2	1	4	3	44	1	37	1
	NATIVE AMERICAN	2	0	0	0	0	0	0	0	0	0	0	0	0	0	2	0	0	0
	MULTIRACE	216	4	8	5	7	4	9	6	4	2	5	3	6	4	255	4	200	5
AGE (YEARS)	< 13	34	1	0	0	1	1	1	1	0	0	0	0	0	0	36	1	27	1
	13 - 19	145	3	7	4	10	6	5	3	10	6	8	5	7	5	192	3	160	4
	20 - 29	1,360	25	62	37	51	29	50	33	63	37	82	47	69	45	1,737	27	1,174	31
	30 - 39	2,021	37	33	20	40	23	47	31	38	22	35	20	36	24	2,250	35	1,246	33
	40 - 49	1,325	24	31	18	44	25	24	16	28	16	22	13	16	11	1,490	23	817	21
	Over 49	594	11	35	21	28	16	26	17	33	19	26	15	24	16	766	12	381	10
MODE OF TRANSMISSION	MSM	3,122	57	101	60	108	62	96	63	102	59	104	60	101	66	3,734	58	2,196	58
	IDU	811	15	6	4	2	1	8	5	5	3	9	5	4	3	845	13	347	9
	MSM/IDU	297	5	3	2	2	1	2	1	3	2	5	3	5	3	317	5	142	4
	COAGULATION DISORDER	63	1	0	0	0	0	0	0	0	0	0	0	0	0	63	1	13	0
	HETEROSEXUAL	791	14	31	18	15	9	17	11	39	23	18	10	7	5	918	14	702	18
	TRANSFUSION	47	1	0	0	0	0	0	0	0	0	0	0	0	0	47	1	8	0
	PEDIATRIC	35	1	0	0	1	1	1	1	0	0	0	0	0	0	37	1	28	1
	UNDETERMINED MODE	313	6	27	16	46	26	29	19	23	13	37	21	35	23	510	8	369	10
COUNTY	ALLEGHENY	4,092	75	132	79	123	71	119	78	128	74	142	82	127	84	4,863	75	2,910	76
	ARMSTRONG	60	1	3	2	2	1	0	0	2	1	0	0	3	2	70	1	37	1
	BEAVER	193	4	7	4	6	3	4	3	5	3	3	2	0	0	218	3	108	3
	BUTLER	106	2	7	4	4	2	3	2	4	2	7	4	2	1	133	2	85	2
	CAMBRIA	193	4	3	2	10	6	4	3	6	3	5	3	4	3	225	3	128	3
	FAYETTE	118	2	4	2	6	3	7	5	5	3	3	2	6	4	149	2	99	3
	GREENE	43	1	0	0	2	1	1	1	1	1	1	1	0	0	48	1	24	1
	INDIANA	61	1	2	1	3	2	1	1	0	0	1	1	1	1	69	1	39	1
	SOMERSET	121	2	2	1	2	1	2	1	2	1	2	1	2	1	133	2	88	2
	WASHINGTON	188	3	3	2	7	4	9	6	3	2	1	1	4	3	215	3	111	3
	WESTMORELAND	304	6	5	3	9	5	3	2	16	9	8	5	3	2	348	5	176	5

\* Includes cases diagnosed prior to 2002

Cummulative are cases diagnosed through December 31, 2016, and reported through March 31, 2017.

Note: Percentages may not add to 100% due to rounding.

**Table 15**  
HIV Disease in Pennsylvania  
Characteristics of Cases by Time Interval of Diagnosis  
NORTHWEST PENNSYLVANIA RURAL AIDS ALLIANCE  
Cameron, Clarion, Clearfield, Crawford, Elk, Erie, Forest, Jefferson,  
Lawrence, McKean, Mercer, Venango and Warren Counties

		BEFORE 2011		2011		2012		2013		2014		2015		2016		TOTAL TO DEC 31, 2016*		CURRENTLY LIVING DEC 31, 2016	
		number	percent	number	percent	number	percent	number	percent	number	percent	number	percent	number	percent	number	percent	number	percent
	TOTAL CASES	1,052	100	29	100	23	100	23	100	30	100	38	100	19	100	1,214	100	741	100
SEX	MALE	839	80	27	93	17	74	14	61	28	93	27	71	15	79	967	80	566	76
	FEMALE	213	20	2	7	6	26	9	39	2	7	11	29	4	21	247	20	175	24
RACE/ETHNICITY	WHITE	668	63	17	59	10	43	11	48	12	40	25	66	11	58	754	62	420	57
	BLACK/AFRICAN AMERICAN	248	24	6	21	11	48	8	35	10	33	8	21	6	32	297	24	192	26
	HISPANIC	100	10	3	10	2	9	1	4	5	17	4	11	2	11	117	10	90	12
	ASIAN/PACIFIC	6	1	0	0	0	0	2	9	0	0	0	0	0	0	8	1	5	1
	NATIVE AMERICAN	1	0	0	0	0	0	0	0	0	0	0	0	0	0	1	0	1	0
	MULTIRACE	29	3	3	10	0	0	1	4	3	10	1	3	0	0	37	3	33	4
AGE (YEARS)	< 13	17	2	0	0	0	0	0	0	0	0	0	0	1	5	18	1	15	2
	13 - 19	30	3	2	7	2	9	2	9	1	3	3	8	0	0	40	3	28	4
	20 - 29	274	26	9	31	3	13	7	30	11	37	18	47	5	26	327	27	227	31
	30 - 39	365	35	7	24	9	39	4	17	10	33	7	18	4	21	406	33	228	31
	40 - 49	249	24	7	24	3	13	2	9	8	27	5	13	4	21	278	23	167	23
	Over 49	117	11	4	14	6	26	8	35	0	0	5	13	5	26	145	12	76	10
MODE OF TRANSMISSION	MSM	431	41	20	69	9	39	7	30	19	63	21	55	8	42	515	42	289	39
	IDU	237	23	0	0	3	13	3	13	2	7	0	0	0	0	245	20	131	18
	MSM/IDU	73	7	1	3	0	0	0	0	0	0	1	3	1	5	76	6	46	6
	COAGULATION DISORDER	15	1	0	0	0	0	0	0	0	0	0	0	0	0	15	1	1	0
	HETEROSEXUAL	187	18	6	21	6	26	10	43	8	27	7	18	3	16	227	19	172	23
	TRANSFUSION	10	1	0	0	0	0	0	0	0	0	0	0	0	0	10	1	0	0
	PEDIATRIC	17	2	0	0	0	0	0	0	0	0	0	0	1	5	18	1	15	2
	UNDETERMINED MODE	82	8	2	7	5	22	3	13	1	3	9	24	6	32	108	9	87	12
COUNTY	CAMERON	0	0	0	0	0	0	0	0	0	0	0	0	0	0	0	0	0	0
	CLARION	23	2	2	7	2	9	0	0	0	0	1	3	0	0	28	2	22	3
	CLEARFIELD	95	9	1	3	1	4	1	4	6	20	4	11	0	0	108	9	71	10
	CRAWFORD	93	9	5	17	5	22	0	0	2	7	1	3	4	21	110	9	68	9
	ELK	10	1	0	0	0	0	0	0	0	0	1	3	0	0	11	1	7	1
	ERIE	475	45	10	34	11	48	14	61	12	40	15	39	13	68	550	45	343	46
	FOREST	13	1	1	3	0	0	0	0	0	0	0	0	0	0	14	1	12	2
	JEFFERSON	25	2	0	0	0	0	0	0	0	0	1	3	0	0	26	2	16	2
	LAWRENCE	84	8	4	14	0	0	3	13	5	17	5	13	0	0	101	8	55	7
	MCKEAN	44	4	1	3	2	9	2	9	1	3	0	0	1	5	51	4	29	4
	MERCER	114	11	4	14	2	9	2	9	4	13	7	18	0	0	133	11	74	10
	VENANGO	43	4	1	3	0	0	1	4	0	0	2	5	1	5	48	4	21	3
	WARREN	33	3	0	0	0	0	0	0	0	0	1	3	0	0	34	3	23	3

\* Includes cases diagnosed prior to 2002

Cumulative are cases diagnosed through December 31, 2016 and reported through March 31, 2017.

Note: Percentages may not add to 100% due to 'rounding.'

**Figure 5**

Confirmed Cases of Pediatric HIV Disease and Perinatal HIV Exposure by Year of Diagnosis, 2003 - 2016

