

ANNUAL HIV SURVEILLANCE SUMMARY REPORT

COMMONWEALTH OF PENNSYLVANIA

2015



Contact Information and Contributors

The Annual HIV Surveillance Summary is prepared by the
Bureau of Epidemiology
Pennsylvania Department of Health

Bureau of Epidemiology
Division of Infectious Disease Epidemiology
HIV Surveillance and Epidemiology Section

Sharon Watkins, PhD, Director, Bureau of Epidemiology
Atmaram Nambiar, MD, MPH, Director, Division of Infectious Disease Epidemiology
Godwin Obiri, DrPH, MS, Director, HIV Surveillance and Epidemiology
Martin Ngokion, MD, MPH, Epidemiologist
Michael Allen, MPH, Epidemiology Research Associate
Bonnie Krampe, MPH, Epidemiology Research Associate
Ikechukwu Onukogu, MS, Epidemiology Program Specialist
Russel Sharif, MPH, Epidemiology Program Specialist

The HIV Surveillance and Epidemiology Section gratefully acknowledges the support of community health districts, county/municipal health departments, physicians, hospitals and laboratories reporting HIV cases in Pennsylvania. This project is funded by a grant award from the Centers for Disease Control and Prevention.

Requests for reprints, updates and inquiries may be sent to:

ATTN: 'Annual HIV Summary Report' Requests
HIV Surveillance and Epidemiology Section
Division of Infectious Disease Epidemiology
Bureau of Epidemiology
Pennsylvania Department of Health
Health and Welfare Building, Room 933
625 Forster St.
Harrisburg, PA 17120

The data provided in the tables, figures and maps are based on HIV reports received through March 31, 2016. Expanded analysis of data presented in the Annual HIV Surveillance Summary and other HIV data may be requested by sending an email to c-hivepi@pa.gov or by telephone/fax to our office at 717-783-0481(phone) or 717-772-6975(fax).

The Pennsylvania Department of Health is an equal opportunity provider of grants, contracts, services and employment.

Suggested Citation of Data Source: Annual HIV Surveillance Summary
Bureau of Epidemiology, Pennsylvania Department of Health

Publication Number: HD0234P

**A Special Note for the Readers of Pennsylvania HIV Surveillance Report:
Explanation for Changes in the Annual HIV Surveillance Summary Report**

This note is intended to inform all readers of changes we have introduced in the Pennsylvania Annual Human Immunodeficiency Virus (HIV) Surveillance Summary Report. The format of this annual summary has changed from the format used in previous years to reflect some changes in the way HIV is viewed. This report considers HIV infection as a single disease entity with varying degrees of severity rather than using separate disease classifications for HIV infection without AIDS and acquired immunodeficiency syndrome (AIDS).

Since the inception of the annual summary report, HIV has been depicted as two conditions, HIV infection without AIDS and AIDS, respectively. This artificial separation served a purpose at the time. However, with advances in the clinical and epidemiologic experiences with HIV infection, HIV disease is now viewed as a spectrum condition, progressing from early stage of infection to full-blown symptomatic infection.

In 2002, Pennsylvania promulgated public health regulations revising the reportability of adult and pediatric AIDS, adding HIV, CD4 count (<200 cells/uL or <14 percent), detectable viral load and perinatal exposure to HIV. The new regulations took effect on Oct. 18, 2002, and active surveillance was conducted retrospectively to Jan. 1, 2000. Since that time, HIV reporting has been ongoing statewide, with the exception of the county of Philadelphia where it did not become reportable by name until October 2005.

In addition, the U.S. Centers for Disease Control and Prevention (CDC) has recently made changes to the HIV case definition, taking into account advances in testing and detection. This new case definition recognizes HIV infection as a disease with varying degrees of severity. For adults and adolescents (i.e., persons aged >13 years), the HIV infection classification system and the surveillance case definitions for HIV infection and AIDS were revised by the CDC in 2008 and combined into a single case definition for HIV infection. In addition, the HIV infection case definition for children aged <13 years and the AIDS case definition for children aged 18 months to <13 years were also revised. No changes were made to the HIV infection classification system, the 24 AIDS-defining conditions for children aged <13 years, or the AIDS case definition for children aged <18 months. These case definitions are intended for public health surveillance only and not as a guide for clinical diagnosis. CDC and the Council of State and Territorial Epidemiologists recommended that all states and territories conduct case surveillance of HIV infection and AIDS using the 2008 surveillance case definitions.

The data in previous years tables and figures were constructed separately for HIV infection without AIDS and AIDS. Most tables and figures now have HIV infection without AIDS combined with AIDS under one identity called HIV disease. Consequently, any comparison of this report to previous years should take into account these differences.

Questions or comment can be directed to:

Dr. Godwin Obiri, Director, HIV Surveillance and Epidemiology
Bureau of Epidemiology
717-783-0481 or email: gobiri@pa.gov

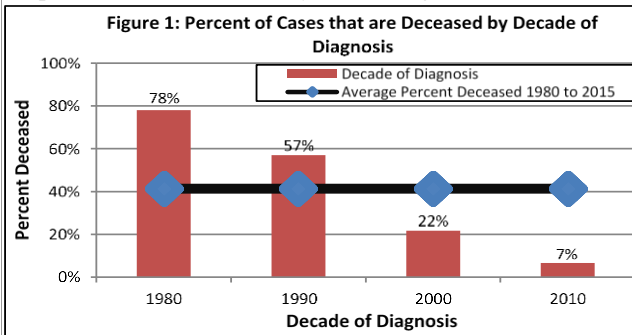
Table of Contents

	PAGE
2015 HIV Surveillance Spotlight	4
Figure 1 Annual Diagnoses of AIDS and HIV infection Without AIDS, 1980-2015	5
Figure 2 Number of Cases of AIDS and HIV Infection Without AIDS by Current Vital Status and Year of Diagnosis	6
Table 1 Annual Diagnoses of HIV Disease for Adult/Adolescent and Pediatric Cases by Year of Diagnosis 1980-2015	7
Table 2 Number of Cases of HIV Disease by Sex, Race/Ethnicity, and Year of Diagnosis, 2009-2015	8
Table 3 Number of Cases of HIV Disease by Age and Year of Diagnosis, 2010-2015	9
Table 4 Number of Cases of HIV Disease by Mode of Transmission and Year of Diagnosis, 2010-2015	10
Table 5 HIV Disease by Race/Ethnicity and Mode of Transmission, 1980-1990, 1991-2000 and 2001-2015	11
Table 5A HIV Disease for Males by Race/Ethnicity and Mode of Transmission, 1980-1990, 1991-2000 and 2001-2015	12
Table 5B HIV Disease for Females by Race/Ethnicity and Mode of Transmission, 1980-1990, 1991-2000 and 2001-2015	13
Table 6 Cumulative Cases of HIV Disease by Vital Status and County of Residence, 2010-2015	14
Table 7 Annual Diagnoses of HIV Disease by County of Residence, 2010-2015	15
Figure 3 New Diagnoses of HIV Disease by County, 2014	16
Figure 4 Rate of New HIV Disease Diagnosed by County, 2014	17
Table 8 Characteristics of HIV Disease by Time Interval of Diagnosis, 2010-2015	18
Characteristics of HIV Disease For 7 Geographic Areas	
Table 9 Characteristics of HIV Disease Cases by Time Interval of Diagnosis, AIDS Activities Coordinating Office	19
Table 10 Characteristics of HIV Disease Cases by Time Interval of Diagnosis, AIDSNET	20
Table 11 Characteristics of HIV Disease Cases by Time Interval of Diagnosis, Northeast Region	21
Table 12 Characteristics of HIV Disease Cases by Time Interval of Diagnosis, Northcentral Region	22
Table 13 Characteristics of HIV Disease Cases by Time Interval of Diagnosis, Southcentral Region	23
Table 14 Characteristics of HIV Disease Cases by Time Interval of Diagnosis, Southwest Region	24
Table 15 Characteristics of HIV Disease Cases by Time Interval of Diagnosis, Northwest Region	25
Figure 5 Confirmed Cases of Pediatric HIV Disease and Perinatal HIV Exposure, 2002-2015	26

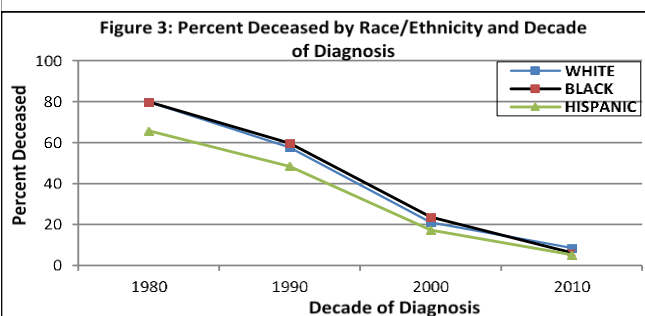
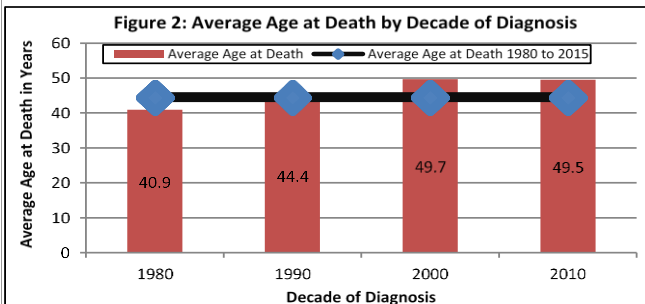
HIV Surveillance Spotlight

Mortality Experience of HIV Infected Individuals in Pennsylvania

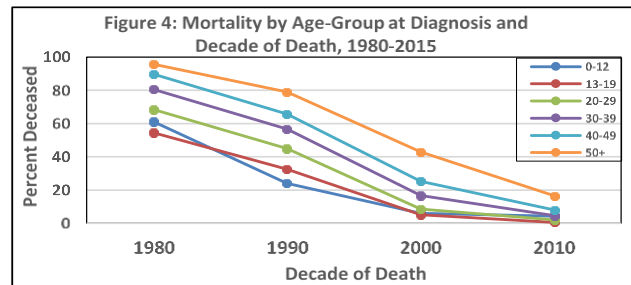
Since the inception of the HIV epidemic, Pennsylvania has recorded 59,559 HIV cases and 24,598 (41.3 percent) of them are presumed to be deceased. In the first decade of the HIV epidemic a diagnosis of AIDS was widely considered to portend death within few years of diagnosis. The first



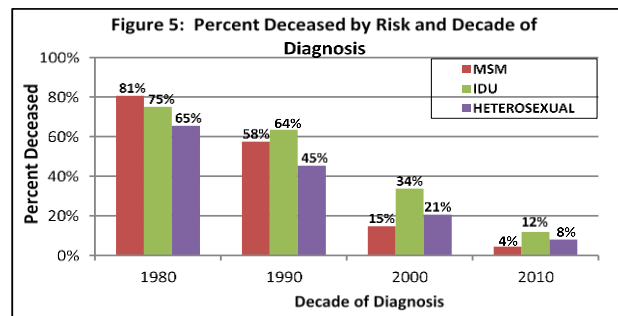
antiretroviral drugs became available in the later part of the 1980s and the first Highly Active Anti-Retroviral Treatments (HAART) became available in the mid-1990s. Since the emergence of HAART, deaths among people living with HIV dropped dramatically. The average age at death has also increased, depending on the decade of diagnosis and death as shown in Figures 1 and 2.



There is little difference among death rates by race for those who have been diagnosed with HIV disease. Previous analysis shows the overall death rate for black and Hispanic persons is disproportionately high because of disproportionate incidence among black and Hispanic residents of Pennsylvania. Examining death experience by race/ethnicity showed that the crude annualized death rate for blacks is approximately 10 times higher than the rate for whites and four times higher than Hispanics. Figure 3 shows percentage of HIV infected within each racial group

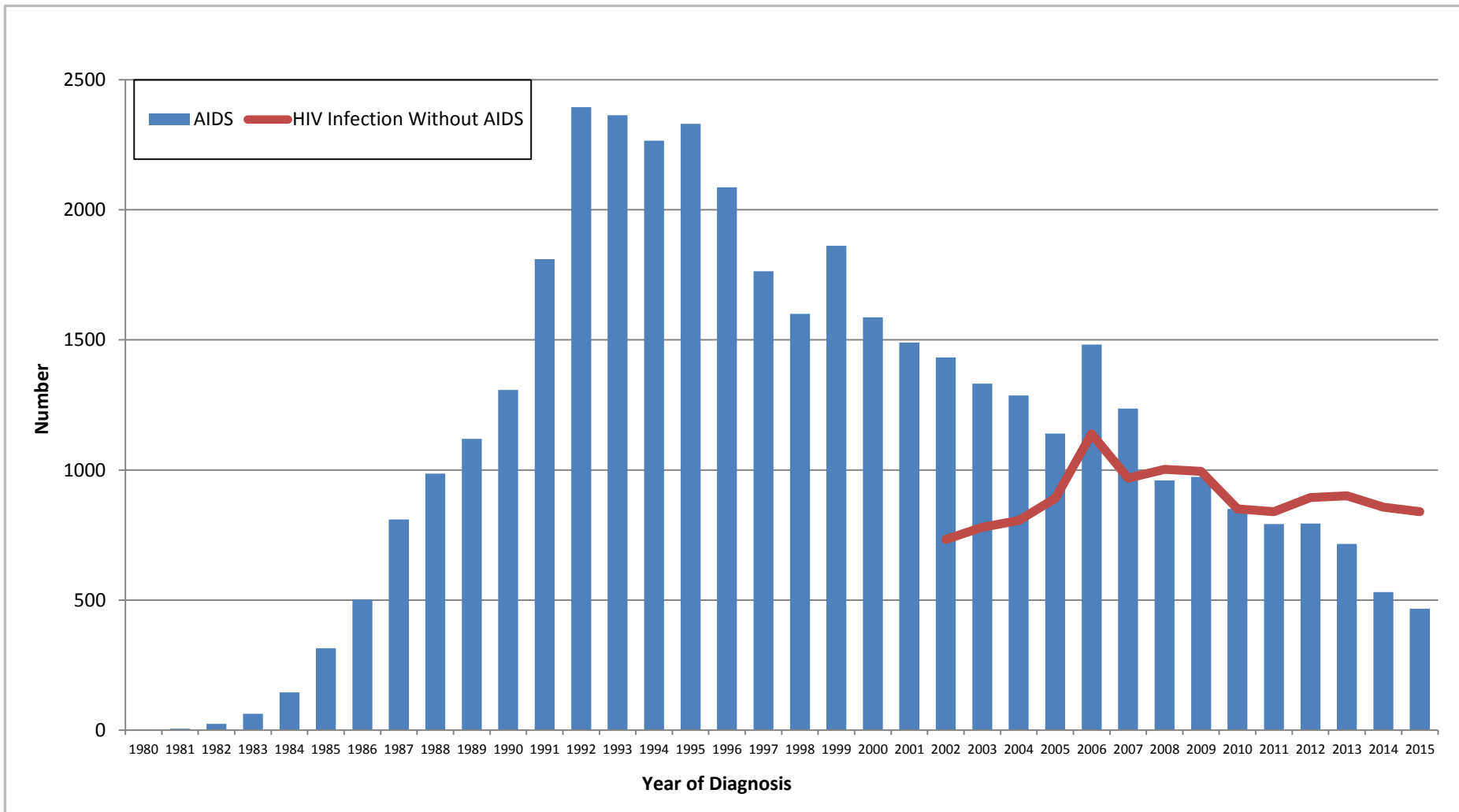


who are deceased by decade of diagnosis. Even though the lines for white and black racial groups appear fairly similar, the burden of mortality is relatively higher for blacks. The death experience for individuals aged 50 and older was more than any age group throughout the four decades of the epidemic (Figure 4). Analysis of death rates by risk indicate that those with injection drug use as a risk are increasingly more likely to die than persons with other



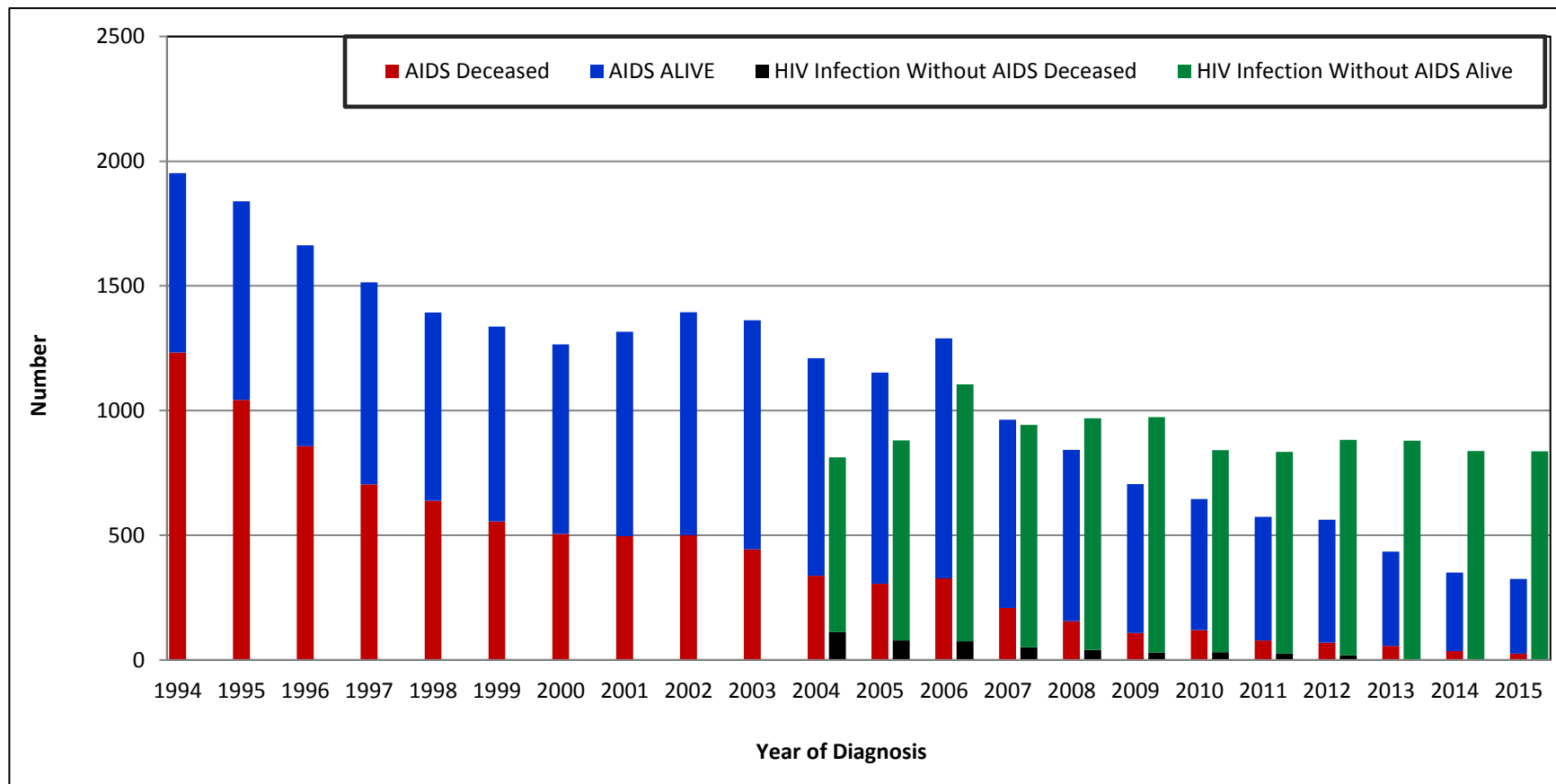
risks, especially in the last three decades (Figure 5). This analysis demonstrates that mortality is still a serious problem among HIV-infected individuals, and there is need for increased screening for individuals and concerted effort for prompt linkage to medical care for those infected. In addition, those linked to treatment should be supported to remain in care to achieve optimal treatment effect.

Figure 1
 Annual Diagnoses of AIDS and HIV Infection Without AIDS by Year of Diagnosis in Pennsylvania
 1980-2015



Note: HIV Infection Without AIDS became reportable in Pennsylvania in October 2002.

Figure 2
Number of Cases of AIDS and HIV Infection Without AIDS in Pennsylvania
Current Vital Status by Year of Diagnosis
1994-2015



Note: HIV Infection Without AIDS became reportable in Pennsylvania in October 2002.

TABLE 1

ANNUAL DIAGNOSES OF HIV DISEASE IN PENNSYLVANIA
 AMONG ADULT/ADOLESCENT AND PEDIATRIC CASES
 BY YEAR OF DIAGNOSIS, 1980-2015

YEAR OF DIAGNOSIS	ADULT/ADOLESCENT	PEDIATRIC*	TOTAL
1980	3	0	3
1981	8	1	9
1982	50	2	52
1983	106	4	110
1984	256	4	260
1985	780	26	806
1986	1,082	14	1,096
1987	1,551	17	1,568
1988	1,911	23	1,934
1989	2,445	24	2,469
1990	2,949	39	2,988
1991	2,959	36	2,995
1992	2,858	67	2,925
1993	2,352	72	2,424
1994	2,227	40	2,267
1995	2,137	44	2,181
1996	2,039	36	2,075
1997	1,880	28	1,908
1998	1,796	32	1,828
1999	1,733	30	1,763
2000	1,751	18	1,769
2001	1,785	25	1,810
2002 [^]	2,109	18	2,127
2003	2,118	24	2,142
2004	2,006	10	2,016
2005	2,032	13	2,045
2006	2,417	15	2,432
2007	1,924	10	1,934
2008	1,834	13	1,847
2009	1,694	6	1,700
2010	1,482	13	1,495
2011	1,408	6	1,414
2012	1,450	9	1,459
2013	1,328	8	1,336
2014	1,202	5	1,207
2015	1,160	5	1,165
TOTAL	58,822	737	59,559

[^] HIV Infection Without AIDS became a reportable condition in Pennsylvania in October 2002.

*Cases diagnosed with HIV disease before age 13.

Table 2
 Number of Cases of HIV Disease Diagnosed by
 Sex, Race/Ethnicity and Year of Diagnosis, 2010-2015.

	2010		2011		2012		2013		2014		2015*		2010-2015		1980-2015 TOTAL TO DATE	
	number	percent	number	percent	number	percent	number	percent	number	percent	number	percent	number	percent	number	percent
TOTAL MALE	1,135	100	1,096	100	1,093	100	1,057	100	948	100	901	100	6,230	100	44,805	100
WHITE (NON-HISPANIC)	377	33	347	32	336	31	316	30	306	32	288	32	1,970	32	16,858	38
BLACK (NON-HISPANIC)	523	46	538	49	555	51	547	52	472	50	465	52	3,100	50	20,756	46
HISPANIC	187	16	178	16	163	15	135	13	126	13	119	13	908	15	5,736	13
ASIAN/PACIFIC	14	1	10	1	15	1	21	2	19	2	16	2	95	2	275	1
NATIVE AMERICAN	1	0	0	0	2	0	5	0	4	0	2	0	14	0	38	0
MULTIPLE RACE	33	3	23	2	22	2	33	3	21	2	11	1	143	2	1,142	3
TOTAL FEMALE	360	100	318	100	366	100	279	100	259	100	264	100	1,846	100	14,754	100
WHITE (NON-HISPANIC)	73	6	65	6	67	6	60	6	53	6	58	6	376	6	3,181	7
BLACK (NON-HISPANIC)	213	19	214	20	228	21	181	17	161	17	164	18	1,161	19	8,688	19
HISPANIC	65	6	29	3	54	5	26	2	38	4	36	4	248	4	2,297	5
ASIAN/PACIFIC	2	0	5	0	6	1	7	1	4	0	4	0	28	0	77	0
NATIVE AMERICAN	1	0	0	0	1	0	0	0	0	0	0	0	2	0	17	0
MULTIPLE RACE	6	1	5	0	10	1	5	0	3	0	2	0	31	0	494	1
TOTAL	1,495	100	1,414	100	1,459	100	1,336	100	1,207	100	1,165	100	8,076	100	59,559	100

*Case count may be incomplete due to lag in reporting.

Note: Percentages may not add to 100% due to rounding.

Table 3
 Number of Cases of HIV Disease Diagnosed
 by Age and Year of Diagnosis, 2010-2015

	2010		2011		2012		2013		2014		2015*		2010-2015		1980-2015 TOTAL TO DATE	
	number	percent	number	percent	number	percent	number	percent	number	percent	number	percent	number	percent	number	percent
ALL AGES	1,495	100	1,414	100	1,459	100	1,336	100	1,207	100	1,165	100	8,076	100	59,559	100
0-12	13	1	6	0	9	1	8	1	5	0	5	0	46	1	737	1
13-19	82	5	73	5	71	5	72	5	61	5	61	5	420	5	1,865	3
20-29	420	28	412	29	459	31	410	31	392	32	418	36	2,511	31	14,431	24
30-39	357	24	314	22	303	21	302	23	270	22	247	21	1,793	22	20,705	35
40-49	351	23	341	24	332	23	269	20	228	19	200	17	1,721	21	14,275	24
OVER 49	272	18	268	19	285	20	275	21	251	21	234	20	1,585	20	7,546	13

*Case count may be incomplete due to lag in reporting.
 Note: Percentages may not add to 100% due to rounding.

Table 4
 Number of Cases of HIV Disease by
 Mode of Transmission and Year of Diagnosis, 2010-2015

	2010		2011		2012		2013		2014		2015*		2010-2015		TOTAL TO DATE 1980-2015	
	number	percent	number	percent	number	percent	number	percent	number	percent	number	percent	number	percent	number	percent
ALL MODES	1,495	100	1,414	100	1,459	100	1,336	100	1,207	100	1,165	100	8,076	100	59,559	100
MEN SEX W/MEN (MSM)	646	43	627	44	643	44	648	49	610	51	607	52	3,781	47	22,188	37
INJECTING DRUG USE (IDU)	149	10	121	9	121	8	90	7	66	5	61	5	608	8	15,464	26
MSM & IDU	44	3	31	2	33	2	30	2	25	2	23	2	186	2	2,875	5
COAGULATION DISORDER	0	0	0	0	0	0	0	0	0	0	0	0	0	0	263	0
HETEROSEXUAL CONTACT	539	36	520	37	477	33	445	33	429	36	327	28	2,737	34	14,756	25
TRANSFUSION RECEIVED	0	0	0	0	0	0	0	0	0	0	0	0	0	0	221	0
UNDETERMINED/OTHER	102	7	108	8	176	12	113	8	72	6	140	12	711	9	3,039	5
ALL PEDIATRIC MODES**	15	1	7	0	9	1	10	1	5	0	7	1	53	1	753	1

*Case count may be incomplete due to lag in reporting.

**Includes adult cases that had pediatric modes of transmission (e.g., perinatal exposure).

Note: Percentages may not add to 100% due to rounding.

Table 5

HIV Disease by Race/Ethnicity and Mode of Transmission, 1980-1990, 1991-2000 and 2001-2015

	WHITE NON-HISPANIC		BLACK NON-HISPANIC		HISPANIC		ASIAN/PACIFIC		NATIVE AMERICAN		MULTIPLE RACE		ALL RACES	
	number	percent	number	percent	number	percent	number	percent	number	percent	number	percent	number	percent
1980-1990														
ALL MODES	5,523	100	4,290	100	1,313	100	25	100	5	100	139	100	11,295	100
MEN SEX W/MEN (MSM)	3,787	69	1,763	41	225	17	19	76	2	40	54	39	5,850	52
INJECTING DRUG USE (IDU)	705	13	1,564	36	793	60	1	4	2	40	52	37	3,117	28
MSM AND IDU	331	6	430	10	93	7	1	4	0	0	25	18	880	8
COAGULATION DISORDER	191	3	10	0	6	0	0	0	0	0	0	0	207	2
HETEROSEXUAL CONTACT	229	4	333	8	143	11	2	8	0	0	7	5	714	6
TRANSFUSION RECEIVED	118	2	18	0	3	0	1	4	0	0	0	0	140	1
ALL PEDIATRIC MODES	53	1	70	2	29	2	0	0	1	20	1	1	154	1
UNDETERMINED/OTHER	109	2	102	2	21	2	1	4	0	0	0	0	233	2
1991-2000														
ALL MODES	6,883	100	11,746	100	2,899	100	66	100	15	100	526	100	22,135	100
MEN SEX W/MEN (MSM)	3,716	54	2,802	24	384	13	30	45	7	47	136	26	7,075	32
INJECTING DRUG USE (IDU)	1,538	22	4,905	42	1,430	49	5	8	2	13	212	40	8,092	37
MSM AND IDU	338	5	682	6	140	5	1	2	1	7	50	10	1,212	5
COAGULATION DISORDER	42	1	3	0	1	0	0	0	0	0	1	0	47	0
HETEROSEXUAL CONTACT	904	13	2,779	24	732	25	17	26	3	20	103	20	4,538	21
TRANSFUSION RECEIVED	42	1	21	0	4	0	5	8	0	0	1	0	73	0
ALL PEDIATRIC MODES	54	1	256	2	82	3	2	3	0	0	9	2	403	2
UNDETERMINED/OTHER	249	4	298	3	126	4	6	9	2	13	14	3	695	3
2001-2015*														
ALL MODES	7,633	100	13,408	100	3,821	100	261	100	35	100	971	100	26,129	100
MEN SEX W/MEN (MSM)	3,934	52	3,965	30	933	24	106	41	13	37	312	32	9,263	35
INJECTING DRUG USE (IDU)	1,028	13	2,062	15	970	25	13	5	2	6	180	19	4,255	16
MSM AND IDU	306	4	290	2	130	3	5	2	1	3	51	5	783	3
COAGULATION DISORDER	6	0	1	0	2	0	0	0	0	0	0	0	9	0
HETEROSEXUAL CONTACT	1,651	22	6,016	45	1,374	36	102	39	19	54	342	35	9,504	36
TRANSFUSION RECEIVED	3	0	4	0	1	0	0	0	0	0	0	0	8	0
ALL PEDIATRIC MODES	22	0	120	1	41	1	4	2	0	0	9	1	196	1
UNDETERMINED/OTHER	683	9	950	7	370	10	31	12	0	0	77	8	2,111	8

*The more recent pattern, 2001-2015, is a better reflection of current distribution of cases than the earlier periods 1980-1990 and 1991-2000.

Note: Percentages may not add to 100% due to rounding.

Table 5A**HIV Disease for Males by Race/Ethnicity and Mode of Transmission, 1980-1990, 1991-2000 and 2001-2015**

	WHITE NON-HISPANIC		BLACK NON-HISPANIC		HISPANIC		ASIAN/PACIFIC		NATIVE AMERICAN		MULTIPLE RACE		ALL RACES	
	number	percent	number	percent	number	percent	number	percent	number	percent	number	percent	number	percent
1980-1990														
ALL MODES	5,037	100	3,566	100	1,018	100	22	100	2	100	115	100	9,760	100
MEN SEX W/MEN (MSM)	3,787	75	1,763	49	225	22	19	86	2	100	54	47	5,850	60
INJECTING DRUG USE (IDU)	458	9	1,118	31	624	61	0	0	0	0	34	30	2,234	23
MSM AND IDU	331	7	430	12	93	9	1	5	0	0	25	22	880	9
COAGULATION DISORDER	188	4	9	0	6	1	0	0	0	0	0	0	203	2
HETEROSEXUAL CONTACT	78	2	120	3	33	3	1	5	0	0	1	1	233	2
TRANSFUSION RECEIVED	68	1	7	0	3	0	0	0	0	0	0	0	78	1
ALL PEDIATRIC MODES	43	1	44	1	21	2	0	0	0	0	1	1	109	1
UNDETERMINED/OTHER	84	2	75	2	13	1	1	5	0	0	0	0	173	2
1991-2000														
ALL MODES	5,655	100	8,206	100	1,950	100	49	100	11	100	365	100	16,236	100
MEN SEX W/MEN (MSM)	3,716	66	2,802	34	384	20	30	61	7	64	136	37	7,075	44
INJECTING DRUG USE (IDU)	969	17	3,379	41	1,084	56	3	6	1	9	128	35	5,564	34
MSM AND IDU	338	6	682	8	140	7	1	2	1	9	50	14	1,212	7
COAGULATION DISORDER	40	1	3	0	1	0	0	0	0	0	1	0	45	0
HETEROSEXUAL CONTACT	369	7	1,021	12	220	11	7	14	1	9	43	12	1,661	10
TRANSFUSION RECEIVED	26	0	9	0	2	0	3	6	0	0	0	0	40	0
ALL PEDIATRIC MODES	34	1	123	1	50	3	1	2	0	0	2	1	210	1
UNDETERMINED/OTHER	163	3	187	2	69	4	4	8	1	9	5	1	429	3
2001-2015*														
ALL MODES	6,166	100	8,984	100	2,768	100	204	100	25	100	662	100	18,809	100
MEN SEX W/MEN (MSM)	3,934	64	3,965	44	933	34	106	52	13	52	312	47	9,263	49
INJECTING DRUG USE (IDU)	612	10	1,341	15	763	28	11	5	0	0	111	17	2,838	15
MSM AND IDU	306	5	290	3	130	5	5	2	1	4	51	8	783	4
COAGULATION DISORDER	5	0	0	0	2	0	0	0	0	0	0	0	7	0
HETEROSEXUAL CONTACT	873	14	2,832	32	684	25	62	30	11	44	149	23	4,611	25
TRANSFUSION RECEIVED	2	0	0	0	1	0	0	0	0	0	0	0	3	0
ALL PEDIATRIC MODES	9	0	59	1	24	1	0	0	0	0	4	1	96	1
UNDETERMINED/OTHER	425	7	497	6	231	8	20	10	0	0	35	5	1,208	6

*The more recent pattern, 2001-2015, is a better reflection of current distribution of cases than the earlier periods 1980-1990 and 1991-2000.

Note: Percentages may not add to 100% due to rounding.

Table 5B

HIV Disease for Females by Race/Ethnicity and Mode of Transmission, 1980-1990, 1991-2000 and 2001-2015

	WHITE NON-HISPANIC		BLACK NON-HISPANIC		HISPANIC		ASIAN/PACIFIC		NATIVE AMERICAN		MULTIPLE RACE		ALL RACES	
	number	percent	number	percent	number	percent	number	percent	number	percent	number	percent	number	percent
1980-1990														
ALL MODES	486	100	724	100	295	100	3	100	3	100	24	100	1,535	100
MEN SEX W/MEN (MSM)	0	0	0	0	0	0	0	0	0	0	0	0	0	0
INJECTING DRUG USE (IDU)	247	51	446	62	169	57	1	33	2	67	18	75	883	58
MSM AND IDU	0	0	0	0	0	0	0	0	0	0	0	0	0	0
COAGULATION DISORDER	3	1	1	0	0	0	0	0	0	0	0	0	4	0
HETEROSEXUAL CONTACT	151	31	213	29	110	37	1	33	0	0	6	25	481	31
TRANSFUSION RECEIVED	50	10	11	2	0	0	1	33	0	0	0	0	62	4
ALL PEDIATRIC MODES	10	2	26	4	8	3	0	0	1	33	0	0	45	3
UNDETERMINED/OTHER	25	5	27	4	8	3	0	0	0	0	0	0	60	4
1991-2000														
ALL MODES	1,228	100	3,540	100	949	100	17	100	4	100	161	100	5,899	100
MEN SEX W/MEN (MSM)	0	0	0	0	0	0	0	0	0	0	0	0	0	0
INJECTING DRUG USE (IDU)	569	46	1,526	43	346	36	2	12	1	25	84	52	2,528	43
MSM AND IDU	0	0	0	0	0	0	0	0	0	0	0	0	0	0
COAGULATION DISORDER	2	0	0	0	0	0	0	0	0	0	0	0	2	0
HETEROSEXUAL CONTACT	535	44	1,758	50	512	54	10	59	2	50	60	37	2,877	49
TRANSFUSION RECEIVED	16	1	12	0	2	0	2	12	0	0	1	1	33	1
ALL PEDIATRIC MODES	20	2	133	4	32	3	1	6	0	0	7	4	193	3
UNDETERMINED/OTHER	86	7	111	3	57	6	2	12	1	25	9	6	266	5
2001-2015*														
ALL MODES	1,467	100	4,424	100	1,053	100	57	100	10	100	309	100	7,320	100
MEN SEX W/MEN (MSM)	0	0	0	0	0	0	0	0	0	0	0	0	0	0
INJECTING DRUG USE (IDU)	416	28	721	16	207	20	2	4	2	20	69	22	1,417	19
MSM AND IDU	0	0	0	0	0	0	0	0	0	0	0	0	0	0
COAGULATION DISORDER	1	0	1	0	0	0	0	0	0	0	0	0	2	0
HETEROSEXUAL CONTACT	778	53	3,184	72	690	66	40	70	8	80	193	62	4,893	67
TRANSFUSION RECEIVED	1	0	4	0	0	0	0	0	0	0	0	0	5	0
ALL PEDIATRIC MODES	13	1	61	1	17	2	4	7	0	0	5	2	100	1
UNDETERMINED/OTHER	258	18	453	10	139	13	11	19	0	0	42	14	903	12

*The more recent pattern, 2001-2015, is a better reflection of current distribution of cases than the earlier periods 1980-1990 and 1991-2000.

Note: Percentages may not add to 100% due to rounding.

Table 6
 Cumulative Cases for HIV Disease by
 Mortality Status and County of Residence, 1980-2015

COUNTY	PRESUMED ALIVE	REPORTED DEAD	CUMULATIVE CASES
PHILADELPHIA	18,114	13,430	31,544
ALLEGHENY	2,830	1,914	4,744
DELAWARE	1,690	1,254	2,944
MONTGOMERY	1,125	739	1,864
DAUPHIN	1,022	694	1,716
BERKS	1,003	619	1,622
LEHIGH	1,037	512	1,549
LANCASTER	866	544	1,410
BUCKS	817	556	1,373
YORK	769	465	1,234
CHESTER	528	461	989
NORTHAMPTON	401	279	680
LUZERNE	356	252	608
CUMBERLAND	384	207	591
ERIE	333	205	538
LACKAWANNA	302	177	479
MONROE	287	181	468
LYCOMING	224	177	401
WESTMORELAND	175	168	343
CENTRE	176	68	244
LEBANON	138	100	238
SCHUYLKILL	136	89	225
CAMBRIA	129	94	223
FRANKLIN	139	80	219
BEAVER	110	108	218
WASHINGTON	111	102	213
UNION	127	50	177
BLAIR	79	78	157
FAYETTE	94	50	144
NORTHUMBERLAND	81	60	141
PIKE	96	40	136
ADAMS	80	53	133
BUTLER	86	47	133
MERCER	77	56	133
CARBON	86	45	131

COUNTY	PRESUMED ALIVE	REPORTED DEAD	CUMULATIVE CASES
SOMERSET	87	44	131
WAYNE	65	58	123
HUNTINGDON	72	42	114
CRAWFORD	69	41	110
CLEARFIELD	70	36	106
LAWRENCE	52	46	98
COLUMBIA	62	28	90
INDIANA	38	30	68
ARMSTRONG	34	33	67
BRADFORD	37	30	67
MCKEAN	29	22	51
PERRY	32	18	50
GREENE	24	24	48
BEDFORD	28	19	47
VENANGO	19	27	46
TIOGA	20	19	39
MIFFLIN	20	16	36
SUSQUEHANNA	20	16	36
WARREN	23	11	34
MONTOUR	17	12	29
CLARION	22	6	28
SNYDER	18	9	27
WYOMING	12	14	26
JEFFERSON	15	10	25
JUNIATA	16	8	24
CLINTON	14	9	23
FOREST	12	2	14
ELK	7	4	11
FULTON	10	1	11
POTTER	2	7	9
SULLIVAN	7	2	9
CAMERON	0	0	0
STATE TOTAL	34,961	24,598	59,559

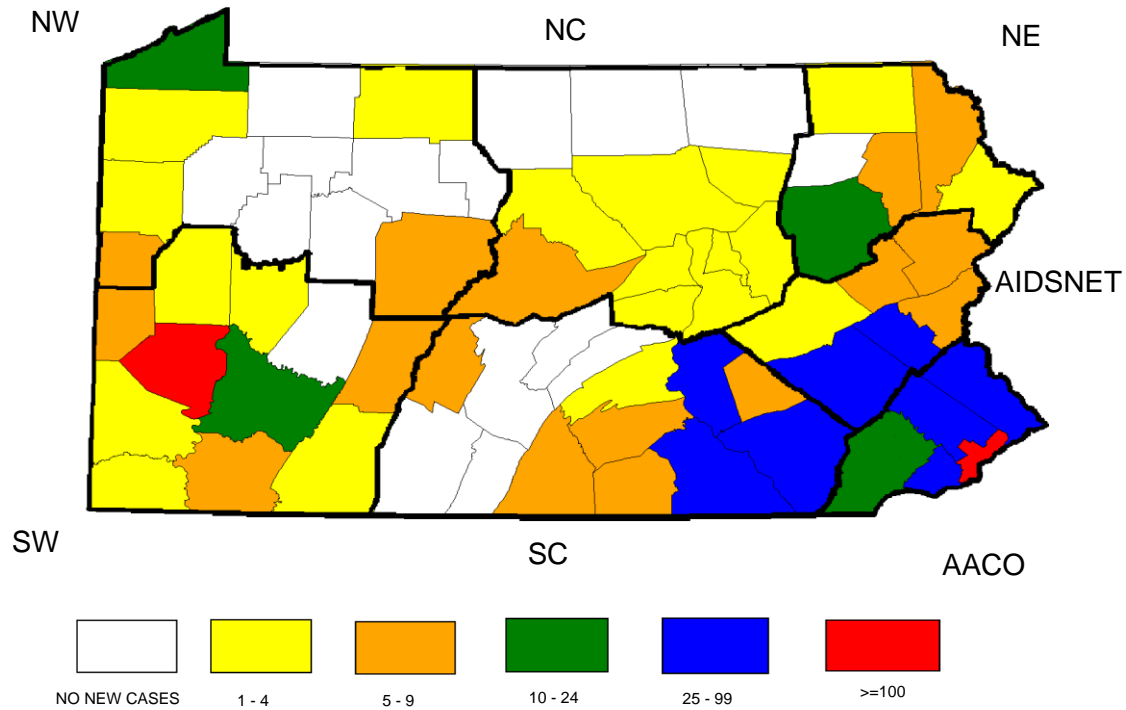
Table 7
Annual Diagnoses of HIV Disease
By County of Residence
2012-2015

COUNTY	2012	2013	2014	2015	2014 RATE PER 100,000*
ADAMS	5	1	5	6	4.92
ALLEGHENY	125	122	128	145	10.40
ARMSTRONG	2	0	2	0	2.95
BEAVER	6	4	5	2	2.95
BEDFORD	5	0	0	7	0.00
BERKS	37	33	33	39	7.98
BLAIR	3	3	5	6	3.97
BRADFORD	1	0	0	1	0.00
BUCKS	42	37	31	30	4.95
BUTLER	4	3	4	7	2.15
CAMBRIA	10	4	6	6	4.36
CAMERON	0	0	0	0	0.00
CARBON	6	1	6	11	9.31
CENTRE	7	8	5	9	3.15
CHESTER	34	18	21	13	4.10
CLARION	2	0	0	1	0.00
CLEARFIELD	1	1	6	3	7.39
CLINTON	3	0	1	0	2.52
COLUMBIA	3	1	1	3	1.49
CRAWFORD	5	0	2	2	2.29
CUMBERLAND	9	16	9	8	3.69
DAUPHIN	40	33	37	36	13.63
DELAWARE	94	78	72	65	12.79
ELK	0	0	0	1	0.00
ERIE	11	14	12	16	4.31
FAYETTE	6	7	5	4	3.73
FOREST	0	0	0	0	0.00
FRANKLIN	4	7	9	2	5.89
FULTON	0	1	0	0	0.00
GREENE	2	1	1	1	2.64
HUNTINGDON	1	1	0	3	0.00
INDIANA	3	1	0	1	0.00
JEFFERSON	0	0	0	0	0.00
JUNIATA	1	0	0	0	0.00
LACKAWANNA	13	12	9	14	4.23

COUNTY	2012	2013	2014	2015	2014 RATE PER 100,000*
LANCASTER	32	34	28	35	5.25
LAWRENCE	0	3	5	2	5.63
LEBANON	9	6	6	4	4.40
LEHIGH	42	40	40	30	11.18
LUZERNE	17	18	17	20	5.33
LYCOMING	7	4	4	4	3.43
MCKEAN	2	2	1	0	2.35
MERCER	2	2	4	7	3.48
MIFFLIN	1	1	0	1	0.00
MONROE	14	17	9	10	5.41
MONTGOMERY	48	70	46	26	5.63
MONTOUR	1	0	1	1	5.36
NORTHAMPTON	4	25	5	1	1.66
NORTHUMBERLAND	1	3	2	2	2.13
PERRY	0	2	2	1	4.38
PHILADELPHIA	733	635	556	537	35.63
PIKE	4	12	4	3	7.12
POTTER	0	1	0	0	0.00
SCHUYLKILL	7	5	3	3	2.06
SNYDER	0	0	1	0	2.48
SOMERSET	2	2	2	1	2.62
SULLIVAN	1	0	1	0	15.78
SUSQUEHANNA	1	0	2	1	4.77
TIOGA	0	0	0	0	0.00
UNION	5	2	1	2	2.23
VENANGO	0	1	0	1	0.00
WARREN	0	0	0	1	0.00
WASHINGTON	7	9	3	1	1.44
WAYNE	0	3	5	1	9.73
WESTMORELAND	10	3	16	4	4.45
WYOMING	0	1	0	0	0.00
YORK	23	28	28	24	6.35
STATE TOTAL	1,458	1,336	1,207	1,165	9.44

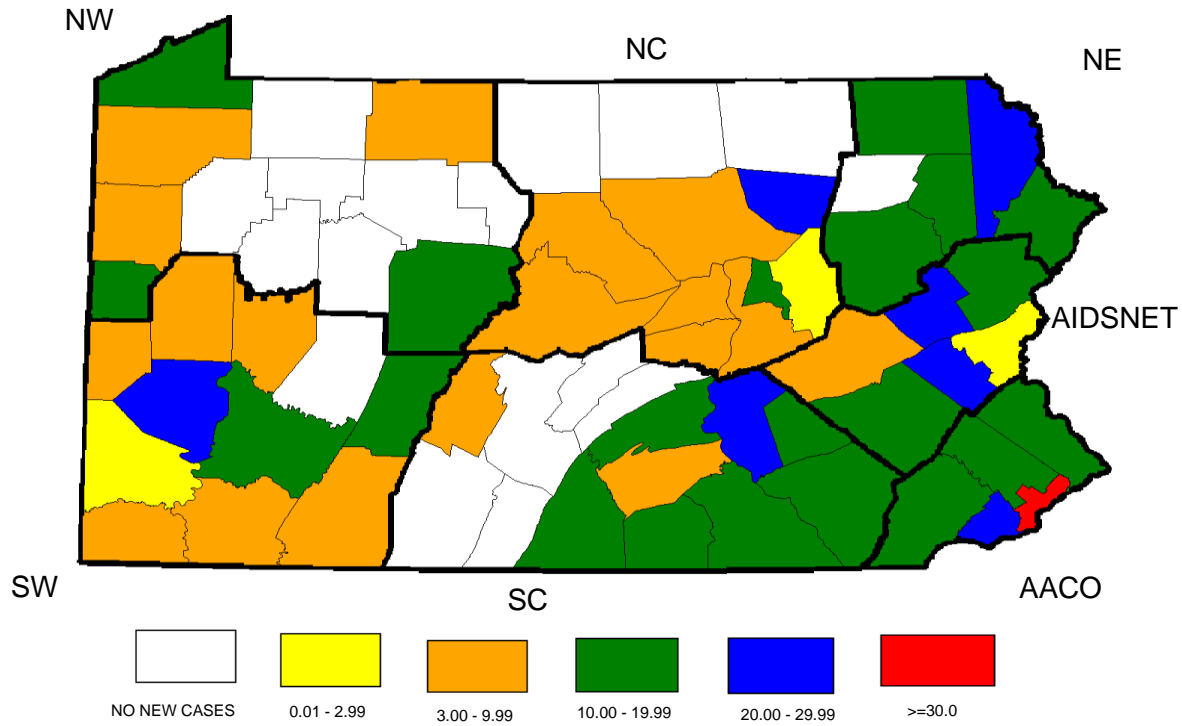
*Rates based on 2014 estimated population

Figure 3
 New Diagnoses of HIV Disease
 by Number of Cases for Each County, 2014



AACO=AIDS Activities Coordinating Office
 AIDSNET = AIDSNET
 NE = Northeast Wyoming Valley
 NC = North Central District AIDS Coalition
 SC = Family Health Council of South Central Pennsylvania
 SW = Southwestern Pennsylvania - Jewish Healthcare Foundation
 NW = Northwest Pennsylvania Rural AIDS Alliance

Figure 4
 Rate* (per 100,000) of New HIV Diseases
 by County, 2014



AACO=AIDS Activities Coordinating Office
 AIDSNET = AIDSNET
 NE = Northeast Wyoming Valley
 NC = North Central District AIDS Coalition
 SC = Family Health Council of South Central Pennsylvania
 SW = Southwestern Pennsylvania - Jewish Healthcare Foundation
 NW = Northwest Pennsylvania Rural AIDS Alliance

* Rates are based on 2014 estimated population

Table 8
 Characteristics of HIV Disease
 by Time Interval of Diagnosis, 2010-2015

		BEFORE 2010		2010		2011		2012		2013		2014		2015*		TOTAL TO DEC 31, 2015		CURRENTLY LIVING DEC 31, 2015	
		number	percent	number	percent	number	percent	number	percent	number	percent	number	percent	number	percent	number	percent	number	percent
	TOTAL CASES	51,484	100	1,495	100	1,414	100	1,458	100	1,336	100	1,207	100	1,165	100	59,559	100	34,961	100
SEX	MALE	38,576	75	1,135	76	1,096	78	1,092	75	1,057	79	948	79	901	77	44,805	75	25,199	72
	FEMALE	12,908	25	360	24	318	22	366	25	279	21	259	21	264	23	14,754	25	9,762	28
RACE/ETHNICITY	WHITE	17,694	34	450	30	412	29	402	28	376	28	359	30	346	30	20,039	34	10,821	31
	BLACK	25,183	49	736	49	752	53	783	54	728	54	633	52	629	54	29,444	49	17,192	49
	HISPANIC	6,877	13	252	17	207	15	217	15	161	12	164	14	155	13	8,033	13	5,389	15
	ASIAN/PACIFIC	229	0	16	1	15	1	21	1	28	2	23	2	20	2	352	1	286	1
	NATIVE AMERICAN	39	0	2	0	0	0	3	0	5	0	4	0	2	0	55	0	41	0
	MULTIRACE	1,462	3	39	3	28	2	32	2	38	3	24	2	13	1	1,636	3	1,232	4
AGE (YEARS)	< 13	691	1	13	1	6	0	9	1	8	1	5	0	5	0	737	1	553	2
	13 - 19	1,445	3	82	5	73	5	71	5	72	5	61	5	61	5	1,865	3	1,540	4
	20 - 29	11,921	23	420	28	412	29	458	31	410	31	392	32	418	36	14,431	24	9,772	28
	30 - 39	18,912	37	357	24	314	22	303	21	302	23	270	22	247	21	20,705	35	11,408	33
	40 - 49	12,554	24	351	23	341	24	332	23	269	20	228	19	200	17	14,275	24	8,000	23
	Over 49	5,961	12	272	18	268	19	285	20	275	21	251	21	234	20	7,546	13	3,688	11
MODE OF TRANSMISSION	MEN SEX W/MEN (MSM)	18,408	36	646	43	627	44	642	44	648	49	610	51	607	52	22,188	37	12,945	37
	INJECTING DRUG USE(IDU)	14,856	29	149	10	121	9	121	8	90	7	66	5	61	5	15,464	26	6,970	20
	MSM AND IDU	2,689	5	44	3	31	2	33	2	30	2	25	2	23	2	2,875	5	1,397	4
	COAGULATION DISORDER	263	1	0	0	0	0	0	0	0	0	0	0	0	0	263	0	65	0
	HETEROSEXUAL CONTACT	12,019	23	539	36	520	37	477	33	445	33	429	36	327	28	14,756	25	10,821	31
	TRANSFUSION	221	0	0	0	0	0	0	0	0	0	0	0	0	0	221	0	30	0
	ALL PEDIATRIC	700	1	15	1	7	0	9	1	10	1	5	0	7	1	753	1	567	2
	UNDETERMINED/OTHER	2,328	5	102	7	108	8	176	12	113	8	72	6	140	12	3,039	5	2,166	6
COALITION AREA	AIDS ACTIVITIES COORDINATING OFFICE	33,700	65	941	63	887	63	951	65	838	63	726	60	671	58	38,714	65	22,274	64
	AIDSNET	4,025	8	124	8	105	7	110	8	121	9	96	8	94	8	4,675	8	2,950	8
	NORTHEAST WYOMING VALLEY	1,178	2	36	2	37	3	35	2	46	3	37	3	39	3	1,408	2	851	2
	NORTH CENTRAL DISTRICT AIDS COALITION	1,120	2	28	2	21	1	29	2	19	1	17	1	22	2	1,256	2	785	2
	FAMILY HEALTH COUNCIL OF SOUTH CENTRAL PENNSYLVANIA	5,123	10	161	11	168	12	133	9	133	10	129	11	133	11	5,980	10	3,655	10
	SOUTHWESTERN PENNSYLVANIA - JEWISH HEALTHCARE FOUNDATION	5,321	10	167	11	167	12	177	12	156	12	172	14	172	15	6,332	11	3,718	11
	NORTHWEST PENNSYLVANIA RURAL AIDS ALLIANCE	1,017	2	38	3	29	2	23	2	23	2	30	2	34	3	1,194	2	728	2

*Case count may be incomplete due to lag in reporting.

Cumulative are cases diagnosed through Dec. 31, 2015, and reported through March 31, 2016.

Note: Percentages may not add to 100% due to rounding .

Table 9
Characteristics of HIV Disease
by Time Interval of Diagnosis, 2010-2015

AIDS Activities Coordinating Office
 Bucks, Delaware, Chester, Montgomery and Philadelphia Counties

		BEFORE 2010		2010		2011		2012		2013		2014		2015*		TOTAL TO DEC 31, 2015		CURRENTLY LIVING DEC 31, 2015	
		number	percent	number	percent	number	percent	number	percent	number	percent	number	percent	number	percent	number	percent	number	percent
	TOTAL CASES	33,700	100	941	100	887	100	951	100	838	100	726	100	671	100	38,714	100	22,274	100
SEX	MALE	25,103	74	688	73	673	76	707	74	673	80	572	79	514	77	28,930	75	15,893	71
	FEMALE	8,597	26	253	27	214	24	244	26	165	20	154	21	157	23	9,784	25	6,381	29
RACE/ETHNICITY	WHITE	8,608	26	191	20	185	21	180	19	154	18	148	20	111	17	9,577	25	4,977	22
	BLACK	20,366	60	564	60	565	64	609	64	555	66	461	63	457	68	23,577	61	13,462	60
	HISPANIC	3,758	11	151	16	117	13	132	14	87	10	88	12	84	13	4,417	11	2,977	13
	ASIAN/PACIFIC	168	0	15	2	11	1	14	1	20	2	14	2	12	2	254	1	206	1
	NATIVE AMERICAN	27	0	1	0	0	0	3	0	5	1	4	1	2	0	42	0	35	0
	MULTIRACE	773	2	19	2	9	1	13	1	17	2	11	2	5	1	847	2	617	3
AGE (YEARS)	< 13	463	1	7	1	3	0	6	1	5	1	2	0	2	0	488	1	377	2
	13 - 19	977	3	53	6	52	6	47	5	52	6	36	5	38	6	1,255	3	1,045	5
	20 - 29	7,820	23	277	29	267	30	328	34	276	33	253	35	239	36	9,460	24	6,411	29
	30 - 39	12,154	36	225	24	197	22	190	20	180	21	152	21	152	23	13,250	34	7,128	32
	40 - 49	8,228	24	209	22	211	24	204	21	157	19	128	18	103	15	9,240	24	4,997	22
	Over 49	4,058	12	170	18	157	18	176	19	168	20	155	21	137	20	5,021	13	2,316	10
MODE OF TRANSMISSION	MSM	11,496	34	375	40	365	41	396	42	409	49	370	51	356	53	13,767	36	7,906	35
	IDU	10,243	30	104	11	83	9	85	9	45	5	39	5	31	5	10,630	27	4,611	21
	MSM/IDU	1,745	5	27	3	22	2	25	3	19	2	16	2	9	1	1,863	5	888	4
	COAGULATION DISORDER	65	0	0	0	0	0	0	0	0	0	0	0	0	0	65	0	18	0
	HETEROSEXUAL	8,697	26	394	42	388	44	387	41	336	40	287	40	246	37	10,735	28	7,793	35
	TRANSFUSION	99	0	0	0	0	0	0	0	0	0	0	0	0	0	99	0	10	0
	PEDIATRIC	463	1	8	1	4	0	6	1	6	1	2	0	3	0	492	1	379	2
	UNDETERMINED MODE	892	3	33	4	25	3	52	5	23	3	12	2	26	4	1,063	3	669	3
COUNTY	BUCKS	1,152	3	35	4	46	5	42	4	37	4	31	4	30	4	1,373	4	817	4
	CHESTER	850	3	21	2	32	4	34	4	18	2	21	3	13	2	989	3	528	2
	DELAWARE	2,458	7	88	9	89	10	94	10	78	9	72	10	65	10	2,944	8	1,690	8
	MONTGOMERY	1,564	5	69	7	41	5	48	5	70	8	46	6	26	4	1,864	5	1,125	5
	PHILADELPHIA	27,676	82	728	77	679	77	733	77	635	76	556	77	537	80	31,544	81	18,114	81

*Case count may be incomplete due to lag in reporting.
 Cumulative are cases diagnosed through Dec. 31, 2015, and reported through March 31, 2016.
 Note: Percentages may not add to 100% due to rounding.

Table 10
Characteristics of HIV Disease
by Time Interval of Diagnosis, 2010-2015

AIDSNET
 Berks, Carbon, Lehigh, Monroe, Northampton and Schuylkill Counties

		BEFORE 2010		2010		2011		2012		2013		2014		2015*		TOTAL TO DEC 31, 2015		CURRENTLY LIVING DEC 31, 2015	
		number	percent	number	percent	number	percent	number	percent	number	percent	number	percent	number	percent	number	percent	number	percent
	TOTAL CASES	4,025	100	124	100	105	100	110	100	121	100	96	100	94	100	4,675	100	2,950	100
SEX	MALE	2,713	67	96	77	78	74	79	72	91	75	62	65	67	71	3,186	68	1,922	65
	FEMALE	1,312	33	28	23	27	26	31	28	30	25	34	35	27	29	1,489	32	1,028	35
RACE/ETHNICITY	WHITE	1,553	39	53	43	31	30	36	33	48	40	24	25	39	41	1,784	38	995	34
	BLACK	707	18	28	23	34	32	27	25	33	27	25	26	27	29	881	19	604	20
	HISPANIC	1,592	40	41	33	35	33	44	40	31	26	44	46	27	29	1,814	39	1,185	40
	ASIAN/PACIFIC	10	0	0	0	0	0	1	1	3	2	1	1	0	0	15	0	11	0
	NATIVE AMERICAN	2	0	0	0	0	0	0	0	0	0	0	0	0	0	2	0	2	0
	MULTIRACE	161	4	2	2	5	5	2	2	6	5	2	2	1	1	179	4	153	5
AGE (YEARS)	< 13	67	2	2	2	0	0	1	1	0	0	1	1	0	0	71	2	54	2
	13 - 19	104	3	4	3	1	1	6	5	3	2	5	5	3	3	126	3	99	3
	20 - 29	902	22	34	27	27	26	29	26	24	20	20	21	24	26	1,060	23	725	25
	30 - 39	1,539	38	22	18	22	21	20	18	25	21	23	24	14	15	1,665	36	964	33
	40 - 49	993	25	36	29	25	24	22	20	37	31	28	29	30	32	1,171	25	747	25
	Over 49	420	10	26	21	30	29	32	29	32	26	19	20	23	24	582	12	361	12
MODE OF TRANSMISSION	MSM	956	24	56	45	38	36	41	37	46	38	31	32	39	41	1,207	26	742	25
	IDU	1,364	34	16	13	14	13	14	13	8	7	8	8	3	3	1,427	31	734	25
	MSM/IDU	163	4	4	3	4	4	3	3	6	5	2	2	3	3	185	4	109	4
	COAGULATION DISORDER	38	1	0	0	0	0	0	0	0	0	0	0	0	0	38	1	13	0
	HETEROSEXUAL	959	24	34	27	33	31	32	29	36	30	40	42	25	27	1,159	25	864	29
	TRANSFUSION	19	0	0	0	0	0	0	0	0	0	0	0	0	0	19	0	4	0
	PEDIATRIC	73	2	2	2	0	0	1	1	0	0	1	1	0	0	77	2	60	2
	UNDETERMINED MODE	453	11	12	10	16	15	19	17	25	21	14	15	24	26	563	12	424	14
COUNTY	BERKS	1,419	35	34	27	27	26	37	34	33	27	33	34	39	41	1,622	35	1,003	34
	CARBON	93	2	9	7	5	5	6	5	1	1	6	6	11	12	131	3	86	3
	LEHIGH	1,307	32	39	31	51	49	42	38	40	33	40	42	30	32	1,549	33	1,037	35
	MONROE	391	10	17	14	10	10	14	13	17	14	9	9	10	11	468	10	287	10
	NORTHAMPTON	617	15	21	17	7	7	4	4	25	21	5	5	1	1	680	15	401	14
	SCHUYLKILL	198	5	4	3	5	5	7	6	5	4	3	3	3	3	225	5	136	5

*Case count may be incomplete due to lag in reporting.
 Cumulative are cases diagnosed through Dec. 31, 2015, and reported through March 31, 2016.
 Note: Percentages may not add to 100% due to rounding.

Table 11
 Characteristics of HIV Disease
 by Time Interval of Diagnosis, 2010-2015

NORTHEAST WYOMING VALLEY
 Lackawanna, Luzerne, Pike, Susquehanna, Wayne and Wyoming Counties

		BEFORE 2010		2010		2011		2012		2013		2014		2015*		TOTAL TO DEC 31, 2015		CURRENTLY LIVING DEC 31, 2015	
		number	percent	number	percent	number	percent	number	percent	number	percent	number	percent	number	percent	number	percent	number	percent
	TOTAL CASES	1,178	100	36	100	37	100	35	100	46	100	37	100	39	100	1,408	100	851	100
SEX	MALE	912	77	26	72	29	78	27	77	29	63	22	59	32	82	1,077	76	612	72
	FEMALE	266	23	10	28	8	22	8	23	17	37	15	41	7	18	331	24	239	28
RACE/ETHNICITY	WHITE	728	62	21	58	22	59	23	66	22	48	22	59	24	62	862	61	473	56
	BLACK	236	20	7	19	9	24	7	20	14	30	8	22	6	15	287	20	192	23
	HISPANIC	156	13	7	19	6	16	5	14	7	15	6	16	9	23	196	14	141	17
	ASIAN/PACIFIC	4	0	0	0	0	0	0	0	0	0	0	0	0	0	4	0	4	0
	NATIVE AMERICAN	3	0	1	3	0	0	0	0	0	0	0	0	0	0	4	0	2	0
	MULTIRACE	51	4	0	0	0	0	0	0	3	7	1	3	0	0	55	4	39	5
AGE (YEARS)	< 13	21	2	0	0	0	0	0	0	1	2	0	0	0	0	22	2	16	2
	13 - 19	29	2	1	3	1	3	1	3	0	0	0	0	1	3	33	2	28	3
	20 - 29	234	20	5	14	6	16	7	20	16	35	6	16	9	23	283	20	194	23
	30 - 39	421	36	8	22	11	30	5	14	10	22	11	30	10	26	476	34	280	33
	40 - 49	345	29	16	44	14	38	7	20	12	26	9	24	6	15	409	29	237	28
	Over 49	128	11	6	17	5	14	15	43	7	15	11	30	13	33	185	13	96	11
MODE OF TRANSMISSION	MSM	382	32	14	39	14	38	20	57	16	35	12	32	16	41	474	34	276	32
	IDU	342	29	3	8	4	11	4	11	10	22	3	8	3	8	369	26	172	20
	MSM/IDU	67	6	1	3	1	3	0	0	0	0	0	0	0	0	69	5	35	4
	COAGULATION DISORDER	13	1	0	0	0	0	0	0	0	0	0	0	0	0	13	1	4	0
	HETEROSEXUAL	213	18	18	50	16	43	8	23	15	33	20	54	13	33	303	22	243	29
	TRANSFUSION	5	0	0	0	0	0	0	0	0	0	0	0	0	0	5	0	1	0
	PEDIATRIC	23	2	0	0	0	0	0	0	1	2	0	0	0	0	24	2	18	2
	UNDETERMINED MODE	133	11	0	0	2	5	3	9	4	9	2	5	7	18	151	11	102	12
COUNTY	LACKAWANNA	405	34	10	28	16	43	13	37	12	26	9	24	14	36	479	34	302	35
	LUZERNE	496	42	22	61	18	49	17	49	18	39	17	46	20	51	608	43	356	42
	PIKE	107	9	3	8	3	8	4	11	12	26	4	11	3	8	136	10	96	11
	SUSQUEHANNA	31	3	1	3	0	0	1	3	0	0	2	5	1	3	36	3	20	2
	WAYNE	114	10	0	0	0	0	0	0	3	7	5	14	1	3	123	9	65	8
	WYOMING	25	2	0	0	0	0	0	0	1	2	0	0	0	0	26	2	12	1

*Case count may be incomplete due to lag in reporting.
 Cumulative are cases diagnosed through Dec. 31, 2015, and reported through March 31, 2016.
 Note: Percentages may not add to 100% due to rounding.

Table 12
 Characteristics of HIV Disease
 by Time Interval of Diagnosis, 2010-2015

NORTH CENTRAL DISTRICT AIDS COALITION
 Bradford, Centre, Clinton, Columbia, Lycoming, Montour, Northumberland
 Potter, Snyder, Sullivan, Tioga, and Union Counties

		BEFORE 2010		2010		2011		2012		2013		2014		2015*		TOTAL TO DEC 31, 2015		CURRENTLY LIVING DEC 31, 2015	
		number	percent	number	percent	number	percent	number	percent	number	percent	number	percent	number	percent	number	percent	number	percent
	TOTAL CASES	1,120	100	28	100	21	100	29	100	19	100	17	100	22	100	1,256	100	785	100
SEX	MALE	842	75	25	89	19	90	26	90	13	68	15	88	21	95	961	77	598	76
	FEMALE	278	25	3	11	2	10	3	10	6	32	2	12	1	5	295	23	187	24
RACE/ETHNICITY	WHITE	561	50	18	64	9	43	6	21	7	37	8	47	12	55	621	49	355	45
	BLACK	371	33	4	14	6	29	17	59	9	47	8	47	4	18	419	33	278	35
	HISPANIC	143	13	5	18	5	24	4	14	2	11	1	6	4	18	164	13	107	14
	ASIAN/PACIFIC	7	1	0	0	0	0	0	0	0	0	0	0	1	5	8	1	8	1
	NATIVE AMERICAN	0	0	0	0	0	0	0	0	0	0	0	0	0	0	0	0	0	0
	MULTIRACE	38	3	1	4	1	5	2	7	1	5	0	0	1	5	44	4	37	5
AGE (YEARS)	< 13	12	1	1	4	0	0	0	0	0	0	1	6	1	5	15	1	12	2
	13 - 19	24	2	1	4	0	0	2	7	1	5	1	6	2	9	31	2	28	4
	20 - 29	251	22	9	32	4	19	9	31	5	26	6	35	6	27	290	23	193	25
	30 - 39	441	39	5	18	4	19	5	17	4	21	4	24	6	27	469	37	276	35
	40 - 49	271	24	7	25	9	43	7	24	3	16	2	12	4	18	303	24	192	24
	Over 49	121	11	5	18	4	19	6	21	6	32	3	18	3	14	148	12	84	11
MODE OF TRANSMISSION	MSM	354	32	16	57	8	38	13	45	4	21	11	65	13	59	419	33	257	33
	IDU	389	35	1	4	1	5	4	14	2	11	0	0	1	5	398	32	215	27
	MSM/IDU	88	8	3	11	0	0	0	0	1	5	0	0	1	5	93	7	52	7
	COAGULATION DISORDER	16	1	0	0	0	0	0	0	0	0	0	0	0	0	16	1	5	1
	HETEROSEXUAL	169	15	3	11	7	33	6	21	3	16	3	18	2	9	193	15	147	19
	TRANSFUSION	7	1	0	0	0	0	0	0	0	0	0	0	0	0	7	1	2	0
	PEDIATRIC	12	1	1	4	0	0	0	0	0	0	1	6	2	9	16	1	13	2
	UNDETERMINED MODE	85	8	4	14	5	24	6	21	9	47	2	12	3	14	114	9	94	12
	COUNTY	BRADFORD	60	5	1	4	4	19	1	3	0	0	0	0	1	5	67	5	37
CENTRE		203	18	9	32	3	14	7	24	8	42	5	29	9	41	244	19	176	22
CLINTON		18	2	1	4	0	0	3	10	0	0	1	6	0	0	23	2	14	2
COLUMBIA		72	6	5	18	5	24	3	10	1	5	1	6	3	14	90	7	62	8
LYCOMING		374	33	3	11	5	24	7	24	4	21	4	24	4	18	401	32	224	29
MONTOUR		24	2	2	7	0	0	1	3	0	0	1	6	1	5	29	2	17	2
NORTHUMBERLAND		129	12	4	14	0	0	1	3	3	16	2	12	2	9	141	11	81	10
POTTER		8	1	0	0	0	0	0	0	1	5	0	0	0	0	9	1	2	0
SNYDER		25	2	1	4	0	0	0	0	0	0	1	6	0	0	27	2	18	2
SULLIVAN		7	1	0	0	0	0	1	3	0	0	1	6	0	0	9	1	7	1
TIOGA		38	3	1	4	0	0	0	0	0	0	0	0	0	0	39	3	20	3
UNION		162	14	1	4	4	19	5	17	2	11	1	6	2	9	177	14	127	16

*Case count may be incomplete due to lag in reporting.
 Cumulative are cases diagnosed through December 31, 2015 and reported through March 31, 2016.
 Note: Percentages may not add to 100% due to rounding.

Table 13
 Characteristics of HIV Disease
 by Time Interval of Diagnosis, 2010-2015

FAMILY HEALTH COUNCIL OF SOUTH CENTRAL PENNSYLVANIA
 Adams, Bedford, Blair, Cumberland, Dauphin, Franklin, Fulton, Huntingdon,
 Juniata, Lancaster, Lebanon, Mifflin, Perry and York Counties

		BEFORE 2010		2010		2011		2012		2013		2014		2015*		TOTAL TO DEC 31, 2015		CURRENTLY LIVING DEC 31, 2015	
		number	percent	number	percent	number	percent	number	percent	number	percent	number	percent	number	percent	number	percent	number	percent
	TOTAL CASES	5,123	100	161	100	168	100	133	100	133	100	129	100	133	100	5,980	100	3,655	100
SEX	MALE	3,755	73	116	72	134	80	91	68	103	77	109	84	106	80	4,414	74	2,607	71
	FEMALE	1,368	27	45	28	34	20	42	32	30	23	20	16	27	20	1,566	26	1,048	29
RACE/ETHNICITY	WHITE	2,573	50	67	42	71	42	57	43	69	52	61	47	66	50	2,964	50	1,748	48
	BLACK	1,350	26	51	32	56	33	41	31	40	30	47	36	42	32	1,627	27	985	27
	HISPANIC	972	19	38	24	37	22	25	19	22	17	16	12	19	14	1,129	19	738	20
	ASIAN/PACIFIC	11	0	1	1	2	1	2	2	1	1	1	1	5	4	23	0	19	1
	NATIVE AMERICAN	4	0	0	0	0	0	0	0	0	0	0	0	0	0	4	0	1	0
	MULTIRACE	213	4	4	2	2	1	8	6	1	1	4	3	1	1	233	4	164	4
AGE (YEARS)	< 13	82	2	0	0	3	2	1	1	1	1	1	1	2	2	90	2	55	2
	13 - 19	146	3	12	7	10	6	3	2	9	7	8	6	5	4	193	3	155	4
	20 - 29	1,143	22	33	20	37	22	31	23	30	23	33	26	42	32	1,349	23	916	25
	30 - 39	2,011	39	49	30	41	24	33	25	31	23	32	25	25	19	2,222	37	1,302	36
	40 - 49	1,183	23	38	24	44	26	43	32	34	26	25	19	30	23	1,397	23	836	23
	Over 49	558	11	29	18	33	20	22	17	28	21	30	23	29	22	729	12	391	11
MODE OF TRANSMISSION	MSM	1,794	35	63	39	80	48	55	41	68	51	66	51	61	46	2,187	37	1,367	37
	IDU	1,476	29	14	9	13	8	9	7	14	11	8	6	14	11	1,548	26	745	20
	MSM/IDU	265	5	2	1	2	1	3	2	2	2	5	4	5	4	284	5	134	4
	COAGULATION DISORDER	53	1	0	0	0	0	0	0	0	0	0	0	0	0	53	1	11	0
	HETEROSEXUAL	1,041	20	51	32	39	23	23	17	28	21	32	25	17	13	1,231	21	898	25
	TRANSFUSION	34	1	0	0	0	0	0	0	0	0	0	0	0	0	34	1	5	0
	PEDIATRIC	82	2	1	1	3	2	1	1	2	2	1	1	2	2	92	2	57	2
	UNDETERMINED MODE	378	7	30	19	31	18	42	32	19	14	17	13	34	26	551	9	438	12
COUNTY	ADAMS	104	2	4	2	8	5	5	4	1	1	5	4	6	5	133	2	80	2
	BEDFORD	32	1	2	1	1	1	5	4	0	0	0	0	7	5	47	1	28	1
	BLAIR	135	3	2	1	3	2	3	2	3	2	5	4	6	5	157	3	79	2
	CUMBERLAND	527	10	14	9	8	5	9	7	16	12	9	7	8	6	591	10	384	11
	DAUPHIN	1,472	29	40	25	58	35	40	30	33	25	37	29	36	27	1,716	29	1,022	28
	FRANKLIN	178	3	11	7	8	5	4	3	7	5	9	7	2	2	219	4	139	4
	FULTON	7	0	2	1	1	1	0	0	1	1	0	0	0	0	11	0	10	0
	HUNTINGDON	108	2	1	1	0	0	1	1	1	1	0	0	3	2	114	2	72	2
	JUNIATA	21	0	2	1	0	0	1	1	0	0	0	0	0	0	24	0	16	0
	LANCASTER	1,198	23	44	27	39	23	32	24	34	26	28	22	35	26	1,410	24	866	24
	LEBANON	203	4	3	2	7	4	9	7	6	5	6	5	4	3	238	4	138	4
	MIFFLIN	32	1	0	0	1	1	1	1	1	1	0	0	1	1	36	1	20	1
	PERRY	44	1	0	0	1	1	0	0	2	2	2	2	1	1	50	1	32	1
	YORK	1,062	21	36	22	33	20	23	17	28	21	28	22	24	18	1,234	21	769	21

*Case count may be incomplete due to lag in reporting.
 Cumulative are cases diagnosed through Dec. 31, 2015, and reported through March 31, 2016.
 Note: Percentages may not add to 100% due to rounding.

Table 14
Characteristics of HIV Disease
by Time Interval of Diagnosis, 2010-2015

SOUTHWESTERN PENNSYLVANIA - JEWISH HEALTHCARE FOUNDATION
 Allegheny, Armstrong, Beaver, Butler, Cambria, Fayette, Greene,
 Indiana, Somerset, Washington and Westmoreland Counties

		BEFORE 2010		2010		2011		2012		2013		2014		2015*		TOTAL TO DEC 31, 2015		CURRENTLY LIVING DEC 31, 2015		
		number	percent	number	percent	number	percent	number	percent	number	percent	number	percent	number	percent	number	percent	number	percent	
	TOTAL CASES	5,321	100	167	100	167	100	177	100	156	100	172	100	172	100	6,332	100	3,718	100	
SEX	MALE	4,444	84	152	91	136	81	145	82	134	86	140	81	137	80	5,288	84	3,012	81	
	FEMALE	877	16	15	9	31	19	32	18	22	14	32	19	35	20	1,044	16	706	19	
RACE/ETHNICITY	WHITE	3,026	57	77	46	77	46	90	51	64	41	84	49	73	42	3,491	55	1,863	50	
	BLACK	1,909	36	74	44	76	46	71	40	69	44	74	43	84	49	2,357	37	1,478	40	
	HISPANIC	160	3	5	3	4	2	5	3	11	7	4	2	9	5	198	3	152	4	
	ASIAN/PACIFIC	23	0	0	0	2	1	4	2	2	1	7	4	2	1	40	1	33	1	
	NATIVE AMERICAN	2	0	0	0	0	0	0	0	0	0	0	0	0	0	2	0	0	0	
	MULTIRACE	201	4	11	7	8	5	7	4	10	6	3	2	4	2	244	4	192	5	
AGE (YEARS)	< 13	32	1	2	1	0	0	1	1	1	1	0	0	0	0	36	1	27	1	
	13 - 19	135	3	11	7	7	4	10	6	5	3	10	6	8	5	186	3	155	4	
	20 - 29	1,307	25	52	31	62	37	51	29	52	33	63	37	81	47	1,668	26	1,111	30	
	30 - 39	1,991	37	34	20	32	19	41	23	48	31	38	22	35	20	2,219	35	1,232	33	
	40 - 49	1,291	24	38	23	31	19	46	26	24	15	28	16	22	13	1,480	23	823	22	
	Over 49	565	11	30	18	35	21	28	16	26	17	33	19	26	15	743	12	370	10	
MODE OF TRANSMISSION	MSM	3,010	57	108	65	102	61	108	61	98	63	101	59	102	59	3,629	57	2,115	57	
	IDU	808	15	7	4	6	4	2	1	8	5	6	3	9	5	846	13	359	10	
	MSM/IDU	290	5	4	2	1	1	2	1	2	1	2	1	4	2	305	5	133	4	
	COAGULATION DISORDER	63	1	0	0	0	0	0	0	0	0	0	0	0	0	63	1	13	0	
	HETEROSEXUAL	764	14	27	16	31	19	15	8	17	11	39	23	18	10	911	14	705	19	
	TRANSFUSION	47	1	0	0	0	0	0	0	0	0	0	0	0	0	47	1	8	0	
	PEDIATRIC	33	1	2	1	0	0	1	1	1	1	0	0	0	0	37	1	28	1	
	UNDETERMINED MODE	306	6	19	11	27	16	49	28	30	19	24	14	39	23	494	8	357	10	
COUNTY	ALLEGHENY	3,962	74	131	78	131	78	125	71	122	78	128	74	145	84	4,744	75	2,830	76	
	ARMSTRONG	60	1	0	0	3	2	2	1	0	0	2	1	0	0	67	1	34	1	
	BEAVER	183	3	11	7	7	4	6	3	4	3	5	3	2	1	218	3	110	3	
	BUTLER	104	2	4	2	7	4	4	2	3	2	4	2	7	4	133	2	86	2	
	CAMBRIA	190	4	4	2	3	2	10	6	4	3	6	3	6	3	223	4	129	3	
	FAYETTE	117	2	1	1	4	2	6	3	7	4	5	3	4	2	144	2	94	3	
	GREENE	41	1	2	1	0	0	2	1	1	1	1	1	1	1	48	1	24	1	
	INDIANA	61	1	0	0	2	1	3	2	1	1	0	0	1	1	68	1	38	1	
	SOMERSET	120	2	2	1	2	1	2	1	2	1	2	1	1	1	131	2	87	2	
	WASHINGTON	186	3	4	2	3	2	7	4	9	6	3	2	1	1	213	3	111	3	
		WESTMORELAND	297	6	8	5	5	3	10	6	3	2	16	9	4	2	343	5	175	5

*Case count may be incomplete due to lag in reporting.
 Cumulative are cases diagnosed through Dec. 31, 2015, and reported through March 31, 2016.
 Note: Percentages may not add to 100% due to rounding.

Table 15
 Characteristics of HIV Disease
 by Time Interval of Diagnosis, 2010-2015

NORTHWEST PENNSYLVANIA RURAL AIDS ALLIANCE
 Cameron, Clarion, Clearfield, Crawford, Elk, Erie, Forest, Jefferson,
 Lawrence, McKean, Mercer, Venango and Warren Counties

		BEFORE 2010		2010		2011		2012		2013		2014		2015*		TOTAL TO DEC 31, 2015		CURRENTLY LIVING DEC 31, 2015	
		number	percent	number	percent	number	percent	number	percent	number	percent	number	percent	number	percent	number	percent	number	percent
	TOTAL CASES	1,017	100	38	100	29	100	23	100	23	100	30	100	34	100	1,194	100	728	100
SEX	MALE	807	79	32	84	27	93	17	74	14	61	28	93	24	71	949	79	555	76
	FEMALE	210	21	6	16	2	7	6	26	9	39	2	7	10	29	245	21	173	24
RACE/ETHNICITY	WHITE	645	63	23	61	17	59	10	43	12	52	12	40	21	62	740	62	410	56
	BLACK	244	24	8	21	6	21	11	48	8	35	10	33	9	26	296	25	193	27
	HISPANIC	96	9	5	13	3	10	2	9	1	4	5	17	3	9	115	10	89	12
	ASIAN/PACIFIC	6	1	0	0	0	0	0	0	2	9	0	0	0	0	8	1	5	1
	NATIVE AMERICAN	1	0	0	0	0	0	0	0	0	0	0	0	0	0	1	0	1	0
	MULTIRACE	25	2	2	5	3	10	0	0	0	0	3	10	1	3	34	3	30	4
AGE (YEARS)	< 13	14	1	1	3	0	0	0	0	0	0	0	0	0	0	15	1	12	2
	13 - 19	30	3	0	0	2	7	2	9	2	9	1	3	4	12	41	3	30	4
	20 - 29	264	26	10	26	9	31	3	13	7	30	11	37	17	50	321	27	222	30
	30 - 39	355	35	14	37	7	24	9	39	4	17	10	33	5	15	404	34	226	31
	40 - 49	243	24	7	18	7	24	3	13	2	9	8	27	5	15	275	23	168	23
	Over 49	111	11	6	16	4	14	6	26	8	35	0	0	3	9	138	12	70	10
MODE OF TRANSMISSION	MSM	416	41	14	37	20	69	9	39	7	30	19	63	20	59	505	42	282	39
	IDU	234	23	4	11	0	0	3	13	3	13	2	7	0	0	246	21	134	18
	MSM/IDU	71	7	3	8	1	3	0	0	0	0	0	0	1	3	76	6	46	6
	COAGULATION DISORDER	15	1	0	0	0	0	0	0	0	0	0	0	0	0	15	1	1	0
	HETEROSEXUAL	176	17	12	32	6	21	6	26	10	43	8	27	6	18	224	19	171	23
	TRANSFUSION	10	1	0	0	0	0	0	0	0	0	0	0	0	0	10	1	0	0
	PEDIATRIC	14	1	1	3	0	0	0	0	0	0	0	0	0	0	15	1	12	2
	UNDETERMINED MODE	81	8	4	11	2	7	5	22	3	13	1	3	7	21	103	9	82	11
COUNTY	CAMERON	0	0	0	0	0	0	0	0	0	0	0	0	0	0	0	0	0	0
	CLARION	22	2	1	3	2	7	2	9	0	0	0	0	1	3	28	2	22	3
	CLEARFIELD	89	9	5	13	1	3	1	4	1	4	6	20	3	9	106	9	70	10
	CRAWFORD	95	9	1	3	5	17	5	22	0	0	2	7	2	6	110	9	69	9
	ELK	9	1	1	3	0	0	0	0	0	0	0	0	1	3	11	1	7	1
	ERIE	455	45	20	53	10	34	11	48	14	61	12	40	16	47	538	45	333	46
	FOREST	12	1	1	3	1	3	0	0	0	0	0	0	0	0	14	1	12	2
	JEFFERSON	24	2	1	3	0	0	0	0	0	0	0	0	0	0	25	2	15	2
	LAWRENCE	81	8	3	8	4	14	0	3	13	5	17	2	6	98	8	52	7	
	MCKEAN	43	4	2	5	1	3	2	9	2	9	1	3	0	0	51	4	29	4
	MERCER	113	11	1	3	4	14	2	9	2	9	4	13	7	21	133	11	77	11
	VENANGO	42	4	1	3	1	3	0	0	1	4	0	0	1	3	46	4	19	3
	WARREN	32	3	1	3	0	0	0	0	0	0	0	0	1	3	34	3	23	3

*Case count may be incomplete due to lag in reporting.
 Cumulative are cases diagnosed through Dec. 31, 2015, and reported through March 31, 2016.
 Note: Percentages may not add to 100% due to rounding.

Figure 5

Confirmed Cases of Pediatric HIV Disease and Perinatal HIV Exposure by Year of Diagnosis, 2003 - 2015

